

Product datasheet for **TA330563**

HP1 alpha (CBX5) Rabbit Polyclonal Antibody

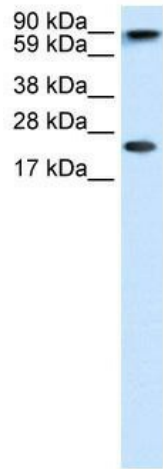
Product data:

Product Type:	Primary Antibodies
Applications:	IF, WB
Recommended Dilution:	WB, IF
Reactivity:	Human
Host:	Rabbit
Isotype:	IgG
Clonality:	Polyclonal
Immunogen:	The immunogen for anti-CBX5 antibody: synthetic peptide directed towards the middle region of human CBX5. Synthetic peptide located within the following region: KYKKMKEGENNKPREKSESNKRKSNFNSADDIKSKKKREQSNDIARGFE
Formulation:	Liquid. Purified antibody supplied in 1x PBS buffer with 0.09% (w/v) sodium azide and 2% sucrose. <i>Note that this product is shipped as lyophilized powder to China customers.</i>
Conjugation:	Unconjugated
Storage:	Store at -20°C as received.
Stability:	Stable for 12 months from date of receipt.
Predicted Protein Size:	22 kDa
Gene Name:	chromobox 5
Database Link:	NP_036249 Entrez Gene 23468 Human P45973
Background:	CBX5 is a methyl-lysine binding protein localized at heterochromatin sites, where it mediates gene silencing.
Synonyms:	HEL25; HP1; HP1A
Note:	Pig: 100%; Rat: 100%; Horse: 100%; Human: 100%; Sheep: 100%; Bovine: 100%; Rabbit: 100%; Dog: 93%; Mouse: 93%

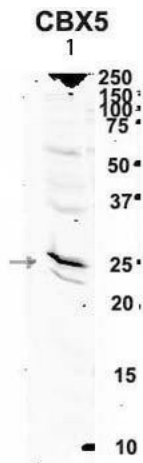


[View online »](#)

Product images:

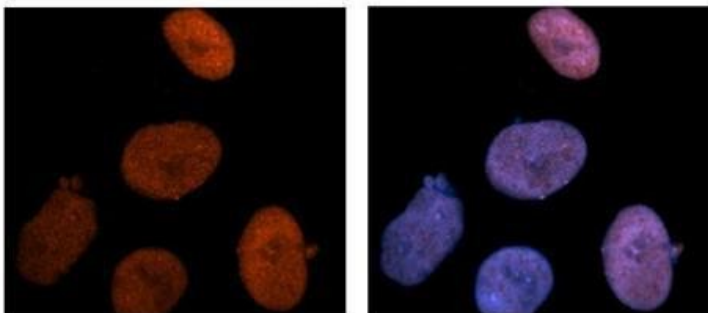


WB Suggested Anti-CBX5 Antibody Titration: 1.25ug/ml; Positive Control: Human brain



See Immunoblot 2 Data for more information.

Sample Type: 1. Human NT-2 cells (60ug); Primary Antibody Dilution: 1/2ug/ml; Secondary Antibody: IRDye 800CW goat anti-rabbit from Li-COR Bioscience; Secondary Antibody Dilution: 1/1: 20,000; Image Submitted by: Yuzhi Chen; University of Arkansas for Med

CBX5

Antibody--RED
DAPI--Blue

See IHC 2 Data and Customer Feedback for more information

Sample Type : Human NT-2 cells Primary
Antibody Dilution : 1:500 Secondary Antibody :
Goat anti-rabbit Alexa-Fluor 594 Secondary
Antibody Dilution : 1:1000 Color/Signal
Descriptions : CBX5: Red DAPI:Blue Gene Name :
CBX5 Submitted by : Dr. Yuzhi Chen, Universi