

Product datasheet for **TA330562**

REST Rabbit Polyclonal Antibody

Product data:

Product Type:	Primary Antibodies
Applications:	WB
Recommended Dilution:	WB
Reactivity:	Human
Host:	Rabbit
Isotype:	IgG
Clonality:	Polyclonal
Immunogen:	The immunogen for anti-REST antibody: synthetic peptide directed towards the middle region of human REST. Synthetic peptide located within the following region: PMLPPSAVEEREAVSKTALASPPATMAANESQEIDEDEGIHSHEGSDLSD
Formulation:	Liquid. Purified antibody supplied in 1x PBS buffer with 0.09% (w/v) sodium azide and 2% sucrose. <i>Note that this product is shipped as lyophilized powder to China customers.</i>
Conjugation:	Unconjugated
Storage:	Store at -20°C as received.
Stability:	Stable for 12 months from date of receipt.
Predicted Protein Size:	122 kDa
Gene Name:	RE1 silencing transcription factor
Database Link:	NP_005603 Entrez Gene 5978 Human Q13127



[View online »](#)

Background:

REST is a transcriptional repressor which represses neuronal genes in non-neuronal tissues. It is a member of the Kruppel-type zinc finger transcription factor family. It represses transcription by binding a DNA sequence element called the neuron-restrictive silencer element. The protein is also found in undifferentiated neuronal progenitor cells, and it is thought that this repressor may act as a master negative regular of neurogenesis. This gene encodes a transcriptional repressor which represses neuronal genes in non-neuronal tissues. It is a member of the Kruppel-type zinc finger transcription factor family. It represses transcription by binding a DNA sequence element called the neuron-restrictive silencer element. The protein is also found in undifferentiated neuronal progenitor cells, and it is thought that this repressor may act as a master negative regular of neurogenesis. Alternatively spliced transcript variants have been described; however, their full length nature has not been determined. Publication Note: This RefSeq record includes a subset of the publications that are available for this gene. Please see the Entrez Gene record to access additional publications.

Synonyms:

NRSF; WT6; XBR

Note:

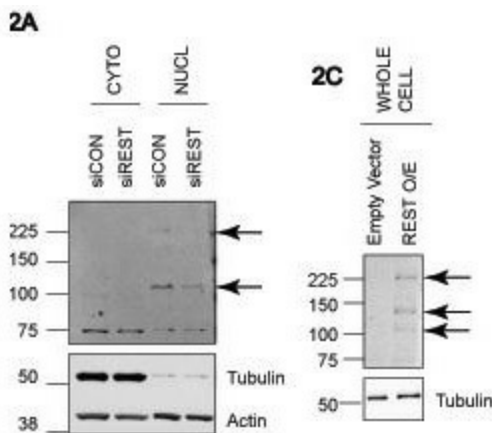
Human: 100%; Dog: 93%; Pig: 93%; Rat: 93%; Horse: 93%; Mouse: 93%; Bovine: 93%; Rabbit: 93%; Guinea pig: 93%

Protein Families:

Transcription Factors

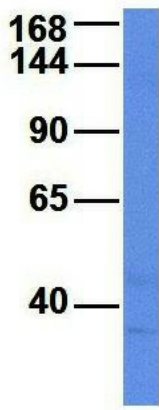
Protein Pathways:

Huntington's disease

Product images:


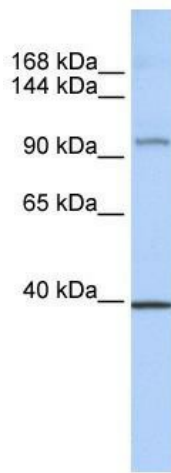
REST antibody - middle region validated by WB using A549 and HEK293T cells at 1: 500.

REST



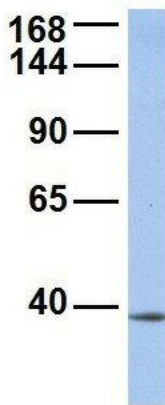
Rabbit Anti-REST
Sample Type: Human Fetal Liver
Antibody Concentration: 1ug/mL

Host: Rabbit; Target Name: REST; Sample Tissue: Human Fetal Liver; Antibody Dilution: 1.0ug/ml



WB Suggested Anti-REST Antibody Titration: 0.2-1 ug/ml; ELISA Titer: 1:62500; Positive Control: MCF7 cell lysate REST is supported by BioGPS gene expression data to be expressed in MCF7

REST



Rabbit Anti-REST
Sample Type: Human MCF7
Antibody Concentration: 1ug/mL

Host: Rabbit; Target Name: REST; Sample Tissue: MCF7; Antibody Dilution: 1.0ug/ml; REST is supported by BioGPS gene expression data to be expressed in MCF7