

## Product datasheet for **TA330558**

### SUV39H1 Rabbit Polyclonal Antibody

#### Product data:

Product Type:	Primary Antibodies
Applications:	IHC, WB
Recommended Dilution:	WB, IHC
Reactivity:	Human
Host:	Rabbit
Isotype:	IgG
Clonality:	Polyclonal
Immunogen:	The immunogen for anti-SUV39H1 antibody: synthetic peptide directed towards the C terminal of human SUV39H1. Synthetic peptide located within the following region: FDYNMQVDPVDMESTRMDSNFGLAGLPGSPKRVRIECKCGTESCRKYL
Formulation:	Liquid. Purified antibody supplied in 1x PBS buffer with 0.09% (w/v) sodium azide and 2% sucrose. <i>Note that this product is shipped as lyophilized powder to China customers.</i>
Conjugation:	Unconjugated
Storage:	Store at -20°C as received.
Stability:	Stable for 12 months from date of receipt.
Predicted Protein Size:	48 kDa
Gene Name:	suppressor of variegation 3-9 homolog 1
Database Link:	<a href="#">NP_003164</a> <a href="#">Entrez Gene 6839 Human</a> <a href="#">O43463</a>



[View online »](#)

**Background:** SUV39H1, a human homolog of the Drosophila position effect variegation modifier Su(var)3-9 and of the *S. pombe* silencing factor clr4, encodes a heterochromatic protein that transiently accumulates at centromeric positions during mitosis. This gene is a member of the suppressor of variegation 3-9 homolog family and encodes a protein with a chromodomain and a C-terminal SET domain. This nuclear protein moves to the centromeres during mitosis and functions as a histone methyltransferase, methylating Lys-9 of histone H3. Overall, it plays a vital role in heterochromatin organization, chromosome segregation, and mitotic progression. Publication Note: This RefSeq record includes a subset of the publications that are available for this gene. Please see the Entrez Gene record to access additional publications.

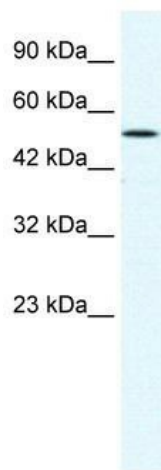
**Synonyms:** H3-K9-HMTase 1; KMT1A; MG44; SUV39H

**Note:** Dog: 100%; Pig: 100%; Rat: 100%; Human: 100%; Mouse: 100%; Bovine: 100%; Rabbit: 100%; Guinea pig: 100%; Zebrafish: 85%

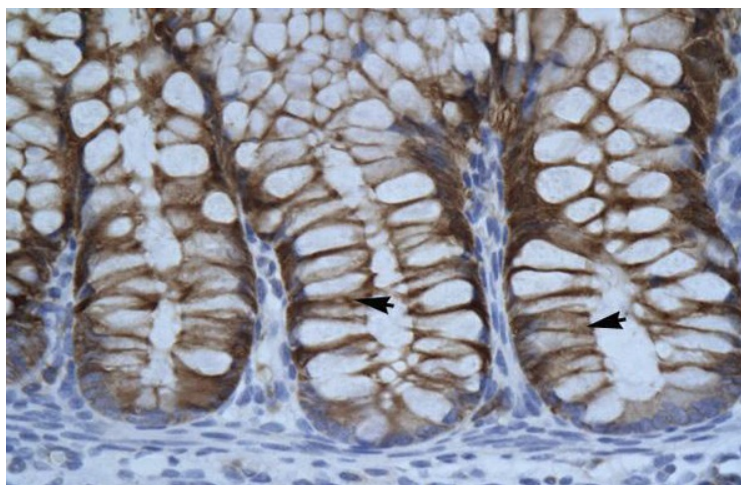
**Protein Families:** Druggable Genome

**Protein Pathways:** Lysine degradation

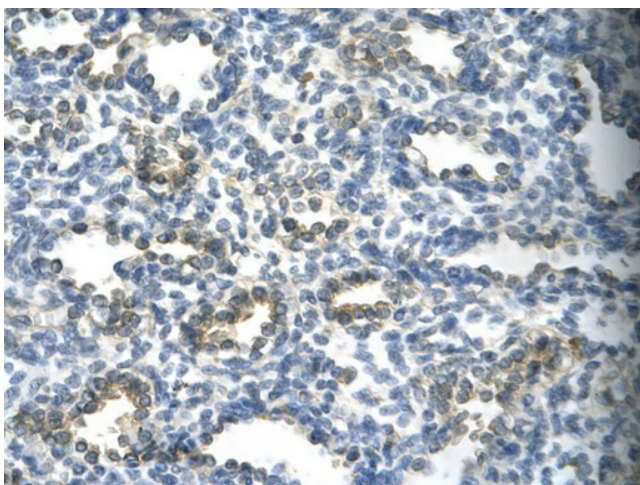
### Product images:



WB Suggested Anti-SUV39H1 Antibody Titration: 1.25ug/ml; ELISA Titer: 1:312500; Positive Control: HepG2 cell lysate SUV39H1 is supported by BioGPS gene expression data to be expressed in HepG2



Human Intestine



Rabbit Anti-SUV39H1 Antibody; Paraffin  
Embedded Tissue: Human alveolar cell; Cellular  
Data: Epithelial cells of renal tubule; Antibody  
Concentration: 4.0-8.0 ug/ml; Magnification: 400X