

## Product datasheet for **TA330556**

### CTBP1 Rabbit Polyclonal Antibody

#### Product data:

Product Type:	Primary Antibodies
Applications:	WB
Recommended Dilution:	WB
Reactivity:	Human, Mouse
Host:	Rabbit
Isotype:	IgG
Clonality:	Polyclonal
Immunogen:	The immunogen for anti-CTBP1 antibody: synthetic peptide directed towards the C terminal of human CTBP1. Synthetic peptide located within the following region: TGIPAAVEGIVPSAMSLSHGLPPVAHPPHAPSPGQTVKPEADRDHASDQL
Formulation:	Liquid. Purified antibody supplied in 1x PBS buffer with 0.09% (w/v) sodium azide and 2% sucrose. <i>Note that this product is shipped as lyophilized powder to China customers.</i>
Conjugation:	Unconjugated
Storage:	Store at -20°C as received.
Stability:	Stable for 12 months from date of receipt.
Predicted Protein Size:	47 kDa
Gene Name:	C-terminal binding protein 1
Database Link:	<a href="#">NP_001319</a> <a href="#">Entrez Gene 13016 Mouse</a> <a href="#">Entrez Gene 1487 Human</a> <a href="#">Q13363</a>
Background:	CTBP1 binds to the C-terminus of adenovirus E1A proteins. This phosphoprotein is a transcriptional repressor and may play a role during cellular proliferation. This protein and the product of a second closely related gene, CTBP2, can dimerize. Both proteins can also interact with a polycomb group protein complex which participates in regulation of gene expression during development. Alternative splicing of transcripts from this gene results in multiple transcript variants.
Synonyms:	BARS

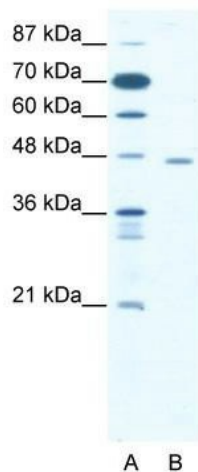


[View online »](#)

**Note:** Dog: 100%; Pig: 100%; Rat: 100%; Human: 100%; Horse: 93%; Mouse: 93%

**Protein Pathways:** Chronic myeloid leukemia, Notch signaling pathway, Pathways in cancer, Wnt signaling pathway

**Product images:**



WB Suggested Anti-CTBP1 Antibody; Titration: 1.25 ug/ml; Positive Control: Jurkat Whole Cell  
CTBP1 is strongly supported by BioGPS gene expression data to be expressed in Human Jurkat cells