

Product datasheet for **TA330555**

CTBP1 Rabbit Polyclonal Antibody

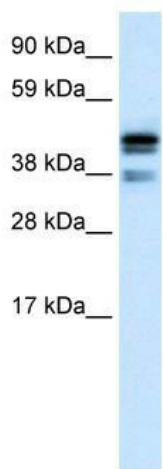
Product data:

Product Type:	Primary Antibodies
Applications:	IHC, WB
Recommended Dilution:	WB, IHC
Reactivity:	Human, Mouse
Host:	Rabbit
Isotype:	IgG
Clonality:	Polyclonal
Immunogen:	The immunogen for anti-CTBP1 antibody: synthetic peptide directed towards the C terminal of human CTBP1. Synthetic peptide located within the following region: TGIPAAVEGIVPSAMSLSHGLPPVAHPPHAPSPGQTVKPEADRDHASDQL
Formulation:	Liquid. Purified antibody supplied in 1x PBS buffer with 0.09% (w/v) sodium azide and 2% sucrose. <i>Note that this product is shipped as lyophilized powder to China customers.</i>
Conjugation:	Unconjugated
Storage:	Store at -20°C as received.
Stability:	Stable for 12 months from date of receipt.
Predicted Protein Size:	48 kDa
Gene Name:	C-terminal binding protein 1
Database Link:	NP_001319 Entrez Gene 13016 Mouse Entrez Gene 1487 Human Q13363
Background:	The phosphoprotein C-terminal binding protein 1 (CTBP-1) binds the C-terminus of adenovirus E1A protein. CTBP-1 is a transcriptional repressor and may play a role during cellular proliferation. A second closely related gene, CTBP2, maps to chromosome 21.
Synonyms:	BARS
Note:	Dog: 100%; Pig: 100%; Rat: 100%; Human: 100%; Horse: 93%; Mouse: 93%
Protein Pathways:	Chronic myeloid leukemia, Notch signaling pathway, Pathways in cancer, Wnt signaling pathway

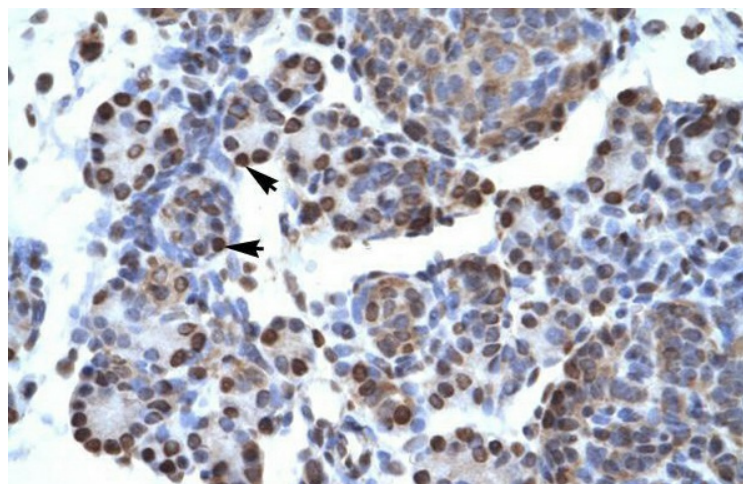


[View online »](#)

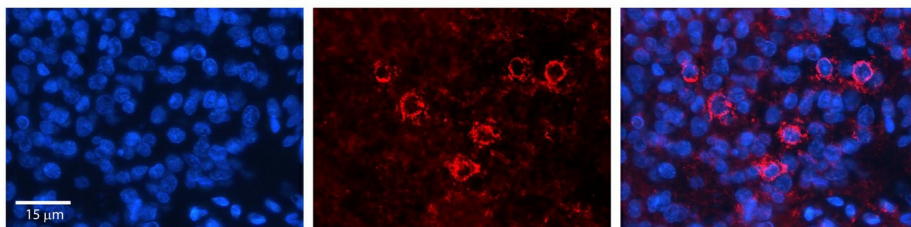
Product images:



WB Suggested Anti-CTBP1 Antibody Titration: 0.2-1 ug/ml; ELISA Titer: 1:62500; Positive Control: Jurkat cell lysate. CTBP1 is strongly supported by BioGPS gene expression data to be expressed in Human Jurkat cells



Human Pancreas



Human Pineal Tissue