

Product datasheet for TA330552

NCOR2 Rabbit Polyclonal Antibody

Product data:

Product Type:	Primary Antibodies
Applications:	WB
Recommended Dilution:	WB
Reactivity:	Human
Host:	Rabbit
Isotype:	IgG
Clonality:	Polyclonal
Immunogen:	The immunogen for anti-NCOR2 antibody: synthetic peptide directed towards the N terminal of human NCOR2. Synthetic peptide located within the following region: PMPRSSQEEKDEKEKEKEAEKEEEKPEVENDKEDLLKEKTDDTSGEDNDE
Formulation:	Liquid. Purified antibody supplied in 1x PBS buffer with 0.09% (w/v) sodium azide and 2% sucrose. <i>Note that this product is shipped as lyophilized powder to China customers.</i>
Conjugation:	Unconjugated
Storage:	Store at -20°C as received.
Stability:	Stable for 12 months from date of receipt.
Predicted Protein Size:	275 kDa
Gene Name:	nuclear receptor corepressor 2
Database Link:	NP_006303 Entrez Gene 9612 Human Q9Y618
Background:	NCOR2 forms a large corepressor complex that contains SIN3A/B and histone deacetylases HDAC1 and HDAC2. This complex associates with the thyroid (TR) and the retinoid acid receptors (RAR) in the absence of ligand, and may stabilize their interaction with TFIIB. NCOR2 mediates the transcriptional repression activity of some nuclear receptors by promoting chromatin condensation, thus preventing access of the basal transcription. Western blots using two different antibodies against two unique regions of this protein target confirm the same apparent molecular weight in our tests.


[View online »](#)

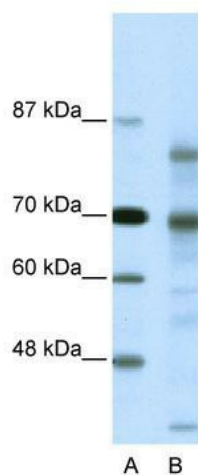
Synonyms: CTG26; N-CoR2; SMAP270; SMRT; SMRTE; SMRTE-tau; TNRC14; TRAC; TRAC-1; TRAC1

Note: Pig: 100%; Human: 100%; Bovine: 93%; Yeast: 87%; Dog: 86%; Rat: 86%; Mouse: 86%; Zebrafish: 79%

Protein Families: Druggable Genome

Protein Pathways: Notch signaling pathway

Product images:



WB Suggested Anti-NCOR2 Antibody Titration:
0.2-1 ug/ml; Positive Control: HeLa cell
lysate NCOR2 is supported by BioGPS gene
expression data to be expressed in HeLa