

## Product datasheet for **TA330551**

### **RPB2 (POLR2B) Rabbit Polyclonal Antibody**

#### **Product data:**

<b>Product Type:</b>	Primary Antibodies
<b>Applications:</b>	WB
<b>Recommended Dilution:</b>	WB
<b>Reactivity:</b>	Human
<b>Host:</b>	Rabbit
<b>Isotype:</b>	IgG
<b>Clonality:</b>	Polyclonal
<b>Immunogen:</b>	The immunogen for anti-POLR2B antibody: synthetic peptide directed towards the N terminal of human POLR2B. Synthetic peptide located within the following region: TYSAPLYVDITKTVIKEGEEQLQTQHKTFIGKIPIMLRSTYCLLNGLTD
<b>Formulation:</b>	Liquid. Purified antibody supplied in 1x PBS buffer with 0.09% (w/v) sodium azide and 2% sucrose. <i>Note that this product is shipped as lyophilized powder to China customers.</i>
<b>Conjugation:</b>	Unconjugated
<b>Storage:</b>	Store at -20°C as received.
<b>Stability:</b>	Stable for 12 months from date of receipt.
<b>Predicted Protein Size:</b>	134 kDa
<b>Gene Name:</b>	polymerase (RNA) II subunit B
<b>Database Link:</b>	<a href="#">NP_000929</a> <a href="#">Entrez Gene 5431 Human P30876</a>
<b>Background:</b>	POLR2B is the second largest subunit of RNA polymerase II, the polymerase responsible for synthesizing messenger RNA in eukaryotes. This subunit, in combination with at least two other polymerase subunits, forms a structure within the polymerase that maintains contact in the active site of the enzyme between the DNA template and the newly synthesized RNA.
<b>Synonyms:</b>	hRPB140; POL2RB; RPB2
<b>Note:</b>	Dog: 100%; Pig: 100%; Rat: 100%; Horse: 100%; Human: 100%; Mouse: 100%; Bovine: 100%; Rabbit: 100%; Guinea pig: 100%; Zebrafish: 85%

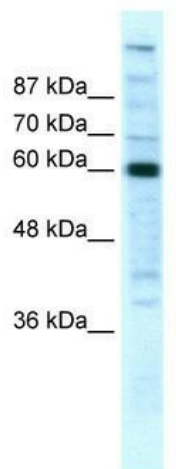


[View online »](#)

**Protein Families:** Transcription Factors

**Protein Pathways:** Huntington's disease, Metabolic pathways, Purine metabolism, Pyrimidine metabolism, RNA polymerase

**Product images:**



WB Suggested Anti-POLR2B Antibody Titration:  
5ug/ml; Positive Control: HepG2 cell lysate