

Product datasheet for **TA330549**

SIRT4 Rabbit Polyclonal Antibody

Product data:

Product Type:	Primary Antibodies
Applications:	WB
Recommended Dilution:	WB
Reactivity:	Human
Host:	Rabbit
Isotype:	IgG
Clonality:	Polyclonal
Immunogen:	The immunogen for anti-SIRT4 antibody: synthetic peptide directed towards the N terminal of human SIRT4. Synthetic peptide located within the following region: ASPPLDPEKVKELQRFITLSKRLVMTGAGISTESGIPDYRSEKVGLYAR
Formulation:	Liquid. Purified antibody supplied in 1x PBS buffer with 0.09% (w/v) sodium azide and 2% sucrose. <i>Note that this product is shipped as lyophilized powder to China customers.</i>
Conjugation:	Unconjugated
Storage:	Store at -20°C as received.
Stability:	Stable for 12 months from date of receipt.
Predicted Protein Size:	35 kDa
Gene Name:	sirtuin 4
Database Link:	NP_036372 Entrez Gene 23409 Human Q9Y6E7



[View online »](#)

Background:

SIRT4 is a member of the sirtuin family of proteins, homologs to the yeast Sir2 protein. Members of the sirtuin family are characterized by a sirtuin core domain and grouped into four classes. The functions of human sirtuins have not yet been determined; however, yeast sirtuin proteins are known to regulate epigenetic gene silencing and suppress recombination of rDNA. Studies suggest that the human sirtuins may function as intracellular regulatory proteins with mono-ADP-ribosyltransferase activity. SIRT4 is included in class IV of the sirtuin family. This gene encodes a member of the sirtuin family of proteins, homologs to the yeast Sir2 protein. Members of the sirtuin family are characterized by a sirtuin core domain and grouped into four classes. The functions of human sirtuins have not yet been determined; however, yeast sirtuin proteins are known to regulate epigenetic gene silencing and suppress recombination of rDNA. Studies suggest that the human sirtuins may function as intracellular regulatory proteins with mono-ADP-ribosyltransferase activity. The protein encoded by this gene is included in class IV of the sirtuin family.

Synonyms:

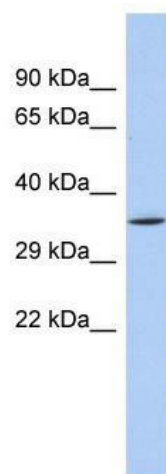
SIR2L4

Note:

Dog: 100%; Pig: 100%; Rat: 100%; Goat: 100%; Horse: 100%; Human: 100%; Mouse: 100%; Sheep: 100%; Bovine: 100%; Rabbit: 100%; Zebrafish: 100%; Guinea pig: 93%

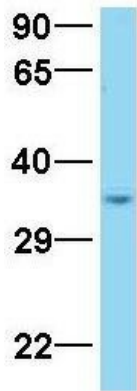
Protein Families:

Druggable Genome, Transcription Factors

Product images:

WB Suggested Anti-SIRT4 Antibody Titration: 0.2-1 ug/ml; ELISA Titer: 1:62500; Positive Control: Human Small Intestine

SIRT4



Rabbit Anti-SIRT4
Sample Type: Human Fetal Liver
Antibody Concentration: 1ug/mL

Host: Rabbit; Target Name: SIRT4; Sample Tissue:
Human Fetal Liver; Antibody Dilution: 1.0ug/ml