

## Product datasheet for **TA330548**

### SIRT4 Rabbit Polyclonal Antibody

#### Product data:

Product Type:	Primary Antibodies
Applications:	IHC, WB
Recommended Dilution:	WB, IHC
Reactivity:	Human
Host:	Rabbit
Isotype:	IgG
Clonality:	Polyclonal
Immunogen:	The immunogen for anti-SIRT4 antibody: synthetic peptide directed towards the middle region of human SIRT4. Synthetic peptide located within the following region: QVPTCVQC GGHLPDVVFFGDTVNPDKVDFVHKRVKEADSLLVGSSLQV
Formulation:	Liquid. Purified antibody supplied in 1x PBS buffer with 0.09% (w/v) sodium azide and 2% sucrose. <i>Note that this product is shipped as lyophilized powder to China customers.</i>
Conjugation:	Unconjugated
Storage:	Store at -20°C as received.
Stability:	Stable for 12 months from date of receipt.
Predicted Protein Size:	35 kDa
Gene Name:	sirtuin 4
Database Link:	<a href="#">NP_036372</a> <a href="#">Entrez Gene 23409 Human</a> <a href="#">Q9Y6E7</a>



[View online »](#)

**Background:**

SIRT4 is a member of the sirtuin family of proteins, homologs to the yeast Sir2 protein. Members of the sirtuin family are characterized by a sirtuin core domain and grouped into four classes. The functions of human sirtuins have not yet been determined; however, yeast sirtuin proteins are known to regulate epigenetic gene silencing and suppress recombination of rDNA. Studies suggest that the human sirtuins may function as intracellular regulatory proteins with mono-ADP-ribosyltransferase activity. SIRT4 is included in class IV of the sirtuin family. This gene encodes a member of the sirtuin family of proteins, homologs to the yeast Sir2 protein. Members of the sirtuin family are characterized by a sirtuin core domain and grouped into four classes. The functions of human sirtuins have not yet been determined; however, yeast sirtuin proteins are known to regulate epigenetic gene silencing and suppress recombination of rDNA. Studies suggest that the human sirtuins may function as intracellular regulatory proteins with mono-ADP-ribosyltransferase activity. The protein encoded by this gene is included in class IV of the sirtuin family.

**Synonyms:**

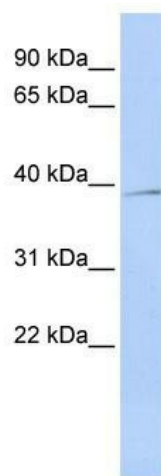
SIR2L4

**Note:**

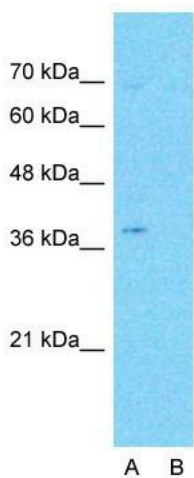
Human: 100%; Rat: 93%; Mouse: 93%; Bovine: 93%; Rabbit: 93%; Sheep: 92%; Pig: 86%; Dog: 79%; Horse: 79%; Guinea pig: 79%

**Protein Families:**

Druggable Genome, Transcription Factors

**Product images:**

WB Suggested Anti-SIRT4 Antibody Titration: 0.2-1 ug/ml; ELISA Titer: 1:62500; Positive Control: MCF7 cell lysate



**Anti-SIRT4 Western Blot & Peptide Block Validation**

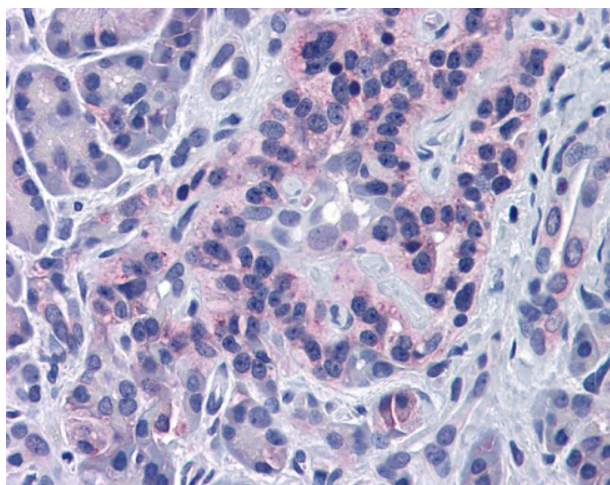
Lot Number: QC2246

Lysate: MCF7 Cell

Lane A: Primary Antibody  
Lane B: Primary Antibody + Blocking Peptide

Primary Antibody Concentration: 1.0µg/ml  
Peptide Concentration: 5.0µg/ml  
Lysate Quantity: 25µg/lane  
Gel Concentration: 12%

Host: Rabbit; Target Name: SIRT4; Sample Tissue: MCF7; Lane A: Primary Antibody; Lane B: Primary Antibody + Blocking Peptide ; Primary Antibody Concentration:1ug/ml; Peptide Concentration: 5ug/ml; Lysate Quantity: 25ug/lane/lane; Gel Concentration: 0.12



Pancreas