

Product datasheet for **TA330547**

PSMD14 Rabbit Polyclonal Antibody

Product data:

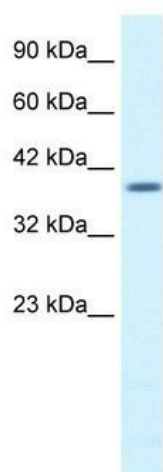
Product Type:	Primary Antibodies
Applications:	IHC, WB
Recommended Dilution:	WB, IHC
Reactivity:	Human, Mouse
Host:	Rabbit
Isotype:	IgG
Clonality:	Polyclonal
Immunogen:	The immunogen for anti-PSMD14 antibody: synthetic peptide directed towards the N terminal of human PSMD14. Synthetic peptide located within the following region: MDRLLRLGGGMPGLGQGPPTDAPAVDTAEQVYISSLALLKMLKHGRAGVP
Formulation:	Liquid. Purified antibody supplied in 1x PBS buffer with 0.09% (w/v) sodium azide and 2% sucrose. <i>Note that this product is shipped as lyophilized powder to China customers.</i>
Conjugation:	Unconjugated
Storage:	Store at -20°C as received.
Stability:	Stable for 12 months from date of receipt.
Predicted Protein Size:	35 kDa
Gene Name:	proteasome 26S subunit, non-ATPase 14
Database Link:	NP_005796 Entrez Gene 59029 Mouse Entrez Gene 10213 Human O00487
Background:	POH1 (pad one homolog-1) is a component of the 26S proteasome, a multiprotein complex that degrades proteins targeted for destruction by the ubiquitin pathway (Spataro et al., 1997 [PubMed 9374539]).
Synonyms:	PAD1; POH1; RPN11
Note:	Dog: 100%; Pig: 100%; Rat: 100%; Horse: 100%; Human: 100%; Mouse: 100%; Bovine: 100%; Rabbit: 100%; Zebrafish: 100%; Guinea pig: 100%
Protein Families:	Druggable Genome, Protease



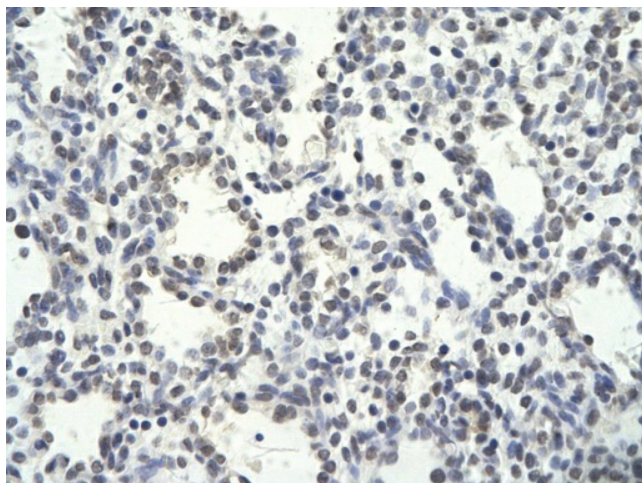
[View online »](#)

Protein Pathways: Proteasome

Product images:



WB Suggested Anti-PSMD14 Antibody Titration: 1.25ug/ml; ELISA Titer: 1:12500; Positive Control: HepG2 cell lysate. PSMD14 is supported by BioGPS gene expression data to be expressed in HepG2



Rabbit Anti-PSMD14 antibody; Paraffin Embedded Tissue: Human Lung cell; Cellular Data: Epithelial cells of renal tubule; Antibody Concentration: 4.0-8.0 ug/ml; Magnification: 400X