

## Product datasheet for **TA330540**

### LHX3 Rabbit Polyclonal Antibody

#### Product data:

Product Type:	Primary Antibodies
Applications:	WB
Recommended Dilution:	WB
Reactivity:	Human
Host:	Rabbit
Isotype:	IgG
Clonality:	Polyclonal
Immunogen:	The immunogen for anti-LHX3 antibody: synthetic peptide directed towards the middle region of human LHX3. Synthetic peptide located within the following region: NMKRSRGGSKSDKSVQEGQSDAEVSFPDEPSLAEMGPANGLYGSLGEP
Formulation:	Liquid. Purified antibody supplied in 1x PBS buffer with 0.09% (w/v) sodium azide and 2% sucrose. <i>Note that this product is shipped as lyophilized powder to China customers.</i>
Conjugation:	Unconjugated
Storage:	Store at -20°C as received.
Stability:	Stable for 12 months from date of receipt.
Predicted Protein Size:	43 kDa
Gene Name:	LIM homeobox 3
Database Link:	<a href="#">NP_835258</a> <a href="#">Entrez Gene 8022 Human</a> <a href="#">Q9UBR4</a>
Background:	LHX3 is a member a large protein family which carry the LIM domain, a unique cysteine-rich zinc-binding domain. The encoded protein is a transcription factor that is required for pituitary development and motor neuron specification. Mutations in this gene have been associated with a syndrome of combined pituitary hormone deficiency and rigid cervical spine. Two transcripts variants encoding distinct isoforms have been identified for this gene.
Synonyms:	CPHD3; LIM3; M2-LHX3

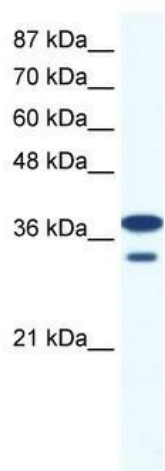


[View online »](#)

**Note:** Human: 100%; Pig: 93%; Rat: 93%; Bovine: 93%; Zebrafish: 92%; Guinea pig: 87%; Dog: 86%; Mouse: 86%; Horse: 85%

**Protein Families:** Druggable Genome

### Product images:



WB Suggested Anti-LHX3 Antibody Titration: 0.2-1 ug/ml; ELISA Titer: 1:312500; Positive Control: Jurkat cell lysate