

## Product datasheet for **TA330538**

### OTX2 Rabbit Polyclonal Antibody

#### Product data:

Product Type:	Primary Antibodies
Applications:	IHC, WB
Recommended Dilution:	WB, IHC
Reactivity:	Human
Host:	Rabbit
Isotype:	IgG
Clonality:	Polyclonal
Immunogen:	The immunogen for anti-OTX2 antibody: synthetic peptide directed towards the N terminal of human OTX2. Synthetic peptide located within the following region: PESRVQVWFKNRRRAKCRQQQQQQNGGQNKVRPAKKKTSPAREVSSSESGT
Formulation:	Liquid. Purified antibody supplied in 1x PBS buffer with 0.09% (w/v) sodium azide and 2% sucrose. <i>Note that this product is shipped as lyophilized powder to China customers.</i>
Conjugation:	Unconjugated
Storage:	Store at -20°C as received.
Stability:	Stable for 12 months from date of receipt.
Predicted Protein Size:	32 kDa
Gene Name:	orthodenticle homeobox 2
Database Link:	<a href="#">NP_068374</a> <a href="#">Entrez Gene 5015 Human P32243</a>



[View online »](#)

**Background:**

Homeobox protein OTX2 is a member of the bicoid sub-family of homeodomain-containing transcription factors. This protein acts as a transcription factor and may play a role in brain and sensory organ development. A similar protein in mice is required for proper forebrain development. Two transcript variants encoding distinct isoforms have been identified for this gene. Other alternative splice variants may exist, but their full length sequences have not been determined. This gene encodes a member of the bicoid sub-family of homeodomain-containing transcription factors. The encoded protein acts as a transcription factor and may play a role in brain and sensory organ development. A similar protein in mice is required for proper forebrain development. Two transcript variants encoding distinct isoforms have been identified for this gene. Other alternative splice variants may exist, but their full length sequences have not been determined.

**Synonyms:**

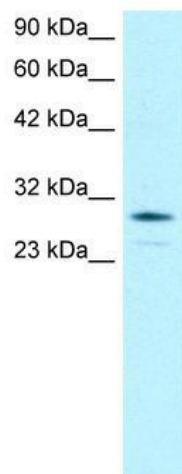
CPHD6; MCOP55

**Note:**

Dog: 100%; Pig: 100%; Rat: 100%; Horse: 100%; Human: 100%; Mouse: 100%; Sheep: 100%; Bovine: 100%; Rabbit: 100%; Zebrafish: 100%; Guinea pig: 100%

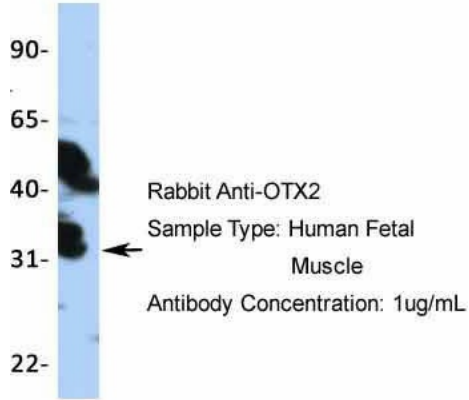
**Protein Families:**

Embryonic stem cells, Induced pluripotent stem cells, Stem cell - Pluripotency, Transcription Factors

**Product images:**

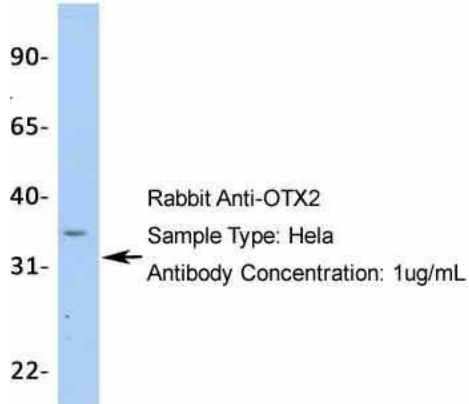
WB Suggested Anti-OTX2 Antibody Titration: 0.2-1 ug/ml; Positive Control: Jurkat cell lysate

## OTX2



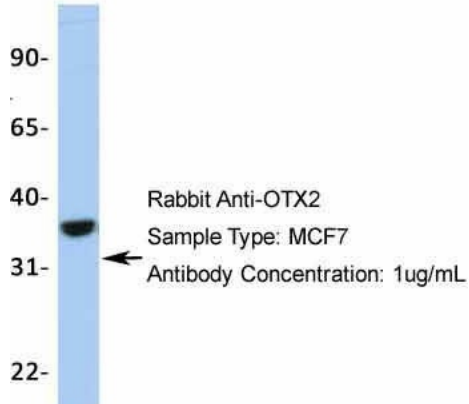
WB Suggested Anti-OTX2 Antibody Titration: 0.2-1 µg/ml; Positive Control: HepG2

## OTX2



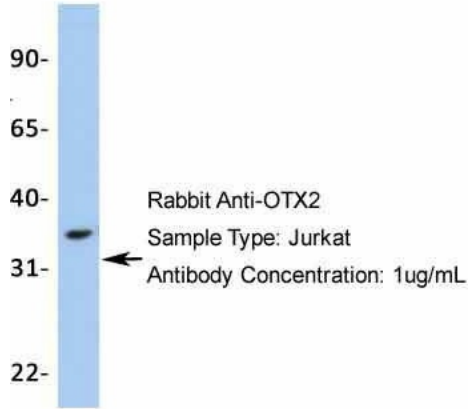
WB Suggested Anti-OTX2 Antibody Titration: 0.2-1 µg/ml; Positive Control: Jurkat

## OTX2



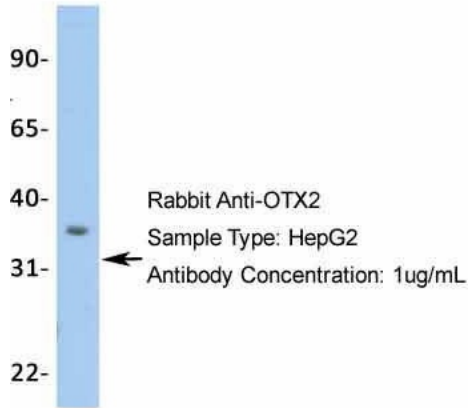
WB Suggested Anti-OTX2 Antibody Titration: 0.2-1 µg/ml; Positive Control: MCF7

### OTX2

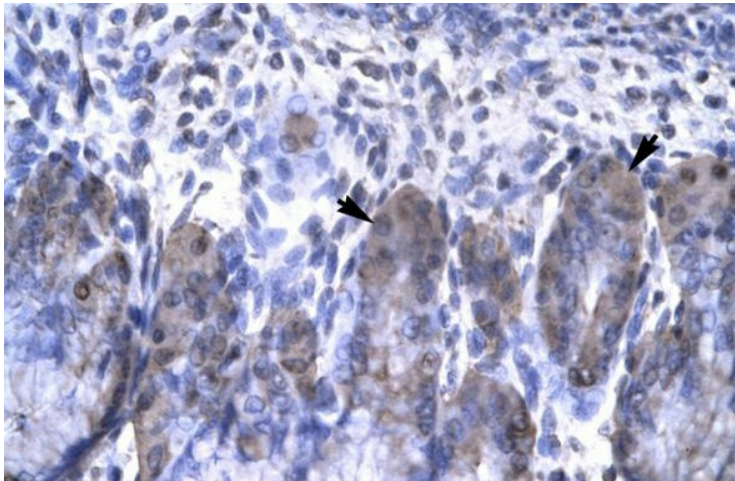


WB Suggested Anti-OTX2 Antibody Titration: 0.2-1 ug/ml; Positive Control: Hela

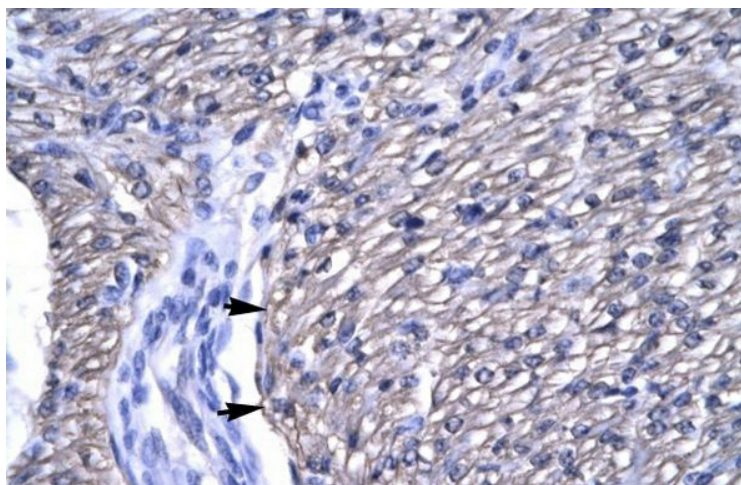
### OTX2



WB Suggested Anti-OTX2 Antibody Titration: 0.2-1 ug/ml; Positive Control: Human Fetal Muscle



Human Stomach



Human Heart