

## Product datasheet for **TA330535**

### **BHLHB5 (BHLHE22) Rabbit Polyclonal Antibody**

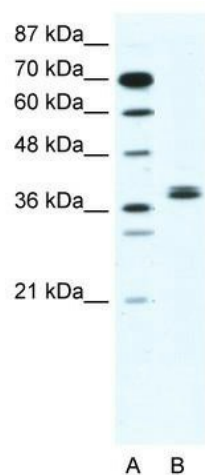
#### **Product data:**

Product Type:	Primary Antibodies
Applications:	WB
Recommended Dilution:	WB
Reactivity:	Human
Host:	Rabbit
Isotype:	IgG
Clonality:	Polyclonal
Immunogen:	The immunogen for anti-BHLHB5 antibody: synthetic peptide directed towards the N terminal of human BHLHB5. Synthetic peptide located within the following region: LPAGAALCLKYGESASRGSVAESSGGEQSPDDSDGRCELVLRAQVADPR
Formulation:	Liquid. Purified antibody supplied in 1x PBS buffer with 0.09% (w/v) sodium azide and 2% sucrose. <i>Note that this product is shipped as lyophilized powder to China customers.</i>
Conjugation:	Unconjugated
Storage:	Store at -20°C as received.
Stability:	Stable for 12 months from date of receipt.
Predicted Protein Size:	37 kDa
Gene Name:	basic helix-loop-helix family member e22
Database Link:	<a href="#">NP_689627</a> <a href="#">Entrez Gene 27319 Human</a> <a href="#">Q8NFJ8</a>
Background:	BHLHB5 is a member of family of basic helix-loop-helix (bHLH) transcription factors. Members of this family have been implicated in many aspects of neural development, including cell growth, differentiation, and cell migration.
Synonyms:	Beta3; BHLHB5; CAGL85; TNRC20
Note:	Pig: 100%; Rat: 100%; Human: 100%; Mouse: 100%; Bovine: 100%; Rabbit: 100%; Zebrafish: 100%; Guinea pig: 100%
Protein Families:	Druggable Genome



[View online »](#)

## Product images:



WB Suggested Anti-BHLHB5 Antibody; Titration:  
2.5 ug/ml; Positive Control: Jurkat Whole Cell