

Product datasheet for **TA330534**

BHLHB5 (BHLHE22) Rabbit Polyclonal Antibody

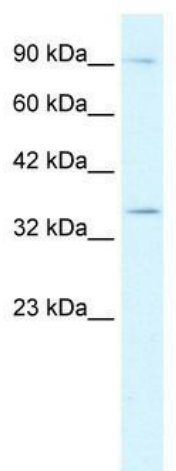
Product data:

Product Type:	Primary Antibodies
Applications:	WB
Recommended Dilution:	WB
Reactivity:	Human
Host:	Rabbit
Isotype:	IgG
Clonality:	Polyclonal
Immunogen:	The immunogen for anti-BHLHB5 antibody: synthetic peptide directed towards the N terminal of human BHLHB5. Synthetic peptide located within the following region: LPAGAALCLKYGESASRGSVAESSGGEQSPDDSDGRCELVLRAGVADPR
Formulation:	Liquid. Purified antibody supplied in 1x PBS buffer with 0.09% (w/v) sodium azide and 2% sucrose.
Conjugation:	Unconjugated
Storage:	Store at -20°C as received.
Stability:	Stable for 12 months from date of receipt.
Predicted Protein Size:	37 kDa
Gene Name:	basic helix-loop-helix family member e22
Database Link:	NP_689627 Entrez Gene 27319 Human Q8NFJ8
Background:	BHLHB5 is a member of family of basic helix-loop-helix (bHLH) transcription factors. Members of this family have been implicated in many aspects of neural development, including cell growth, differentiation, and cell migration.
Synonyms:	Beta3; BHLHB5; CAGL85; TNRC20
Note:	Pig: 100%; Rat: 100%; Human: 100%; Mouse: 100%; Bovine: 100%; Rabbit: 100%; Zebrafish: 100%; Guinea pig: 100%
Protein Families:	Druggable Genome



[View online »](#)

Product images:



WB Suggested Anti-BHLHB5 Antibody Titration:
0.2-1 ug/ml; ELISA Titer: 1:62500; Positive Control:
Jurkat cell lysate