

Product datasheet for **TA330533**

DACH2 Rabbit Polyclonal Antibody

Product data:

Product Type:	Primary Antibodies
Applications:	WB
Recommended Dilution:	WB
Reactivity:	Human
Host:	Rabbit
Isotype:	IgG
Clonality:	Polyclonal
Immunogen:	The immunogen for Anti-DACH2 antibody is: synthetic peptide directed towards the C-terminal region of Human DACH2. Synthetic peptide located within the following region: QALKQATTSDSGLRMLKDTGIPDIEIENNGTPHDSAAMQGGNYYCLEMAQ
Formulation:	Liquid. Purified antibody supplied in 1x PBS buffer with 0.09% (w/v) sodium azide and 2% sucrose. <i>Note that this product is shipped as lyophilized powder to China customers.</i>
Purification:	Affinity Purified
Conjugation:	Unconjugated
Storage:	Store at -20°C as received.
Stability:	Stable for 12 months from date of receipt.
Predicted Protein Size:	41 kDa
Gene Name:	dachshund family transcription factor 2
Database Link:	NP_444511 Entrez Gene 117154 Human Q96NX9



[View online »](#)

Background:

This gene is one of two genes which encode a protein similar to the Drosophila protein dachshund, a transcription factor involved in cell fate determination in the eye, limb and genital disc of the fly. The encoded protein contains two characteristic dachshund domains: an N-terminal domain responsible for DNA binding and a C-terminal domain responsible for protein-protein interactions. This gene is located on the X chromosome and is subject to inactivation by DNA methylation. The encoded protein may be involved in regulation of organogenesis and myogenesis, and may play a role in premature ovarian failure. Multiple transcript variants encoding different isoforms have been found for this gene.

Synonyms:

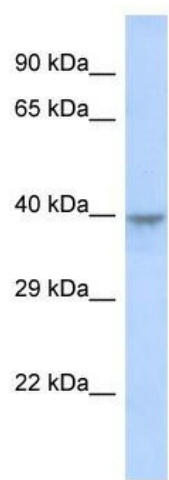
FLJ31391; MGC138545

Note:

Horse: 100%; Human: 100%; Rabbit: 100%; Dog: 93%; Rat: 93%; Mouse: 93%; Bovine: 86%

Protein Families:

Transcription Factors

Product images:

Host: Rabbit; Target Name: DACH2; Sample Tissue: MCF7 Whole cell lysates; Antibody Dilution: 1.0ug/ml