

Product datasheet for **TA330532**

DACH2 Rabbit Polyclonal Antibody

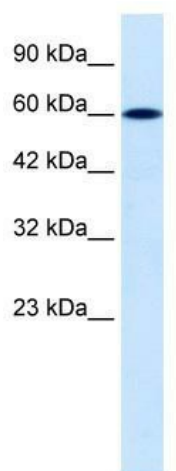
Product data:

Product Type:	Primary Antibodies
Applications:	WB
Recommended Dilution:	WB
Reactivity:	Human, Mouse
Host:	Rabbit
Isotype:	IgG
Clonality:	Polyclonal
Immunogen:	The immunogen for anti-DACH2 antibody: synthetic peptide directed towards the C terminal of human DACH2. Synthetic peptide located within the following region: TKRKLQEALFESKRREQVEQALKQATTSDSGLRMLKDTGIPDIEIENNG
Formulation:	Liquid. Purified antibody supplied in 1x PBS buffer with 0.09% (w/v) sodium azide and 2% sucrose. <i>Note that this product is shipped as lyophilized powder to China customers.</i>
Conjugation:	Unconjugated
Storage:	Store at -20°C as received.
Stability:	Stable for 12 months from date of receipt.
Predicted Protein Size:	65 kDa
Gene Name:	dachshund family transcription factor 2
Database Link:	NP_444511 Entrez Gene 93837 Mouse Entrez Gene 117154 Human Q96NX9
Background:	Most X autosome translocations associated with premature ovarian failure do not interrupt X-linked genes. Only one of the six breakpoints disrupts the DACH2 gene.
Synonyms:	FLJ31391; MGC138545
Note:	Rat: 100%; Horse: 100%; Human: 100%; Mouse: 100%; Rabbit: 100%; Zebrafish: 100%; Dog: 92%; Bovine: 92%
Protein Families:	Transcription Factors



[View online »](#)

Product images:



WB Suggested Anti-DACH2 Antibody Titration:
0.2-1 ug/ml; Positive Control: Jurkat cell lysate