

Product datasheet for **TA330529**

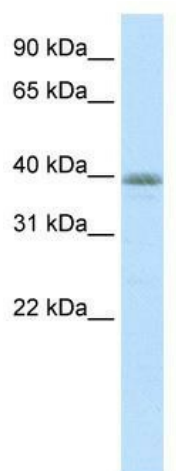
NEUROD6 Rabbit Polyclonal Antibody

Product data:

Product Type:	Primary Antibodies
Applications:	WB
Recommended Dilution:	WB
Reactivity:	Human
Host:	Rabbit
Isotype:	IgG
Clonality:	Polyclonal
Immunogen:	The immunogen for anti-NEUROD6 antibody: synthetic peptide directed towards the N terminal of human NEUROD6. Synthetic peptide located within the following region: MCRKFSRECEDQKQIKKPESFSKQIVLRGKSIKRAPGEETEKEEEEEEDRE
Formulation:	Liquid. Purified antibody supplied in 1x PBS buffer with 0.09% (w/v) sodium azide and 2% sucrose.
Conjugation:	Unconjugated
Storage:	Store at -20°C as received.
Stability:	Stable for 12 months from date of receipt.
Predicted Protein Size:	39 kDa
Gene Name:	neuronal differentiation 6
Database Link:	NP_073565 Entrez Gene 63974 Human Q96NK8
Background:	NEUROD6 contains 1 basic helix-loop-helix (bHLH) domain. It activates E box-dependent transcription in collaboration with TCF3/E47 and may be a trans-acting factor involved in the development and maintenance of the mammalian nervous system. It transactivates the promoter of its own gene.
Synonyms:	Atoh2; bHLHa2; Math-2; MATH2; Nex1; NEX1M
Note:	Dog: 100%; Rat: 100%; Human: 100%; Mouse: 100%; Bovine: 100%; Horse: 93%; Pig: 79%
Protein Families:	Druggable Genome, Transcription Factors



[View online »](#)

Product images:

WB Suggested Anti-NEUROD6 Antibody Titration:
0.2-1 ug/ml; Positive Control: Transfected 293T