

## Product datasheet for **TA330527**

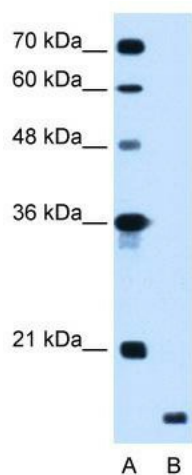
### **RING finger protein 175 (RNF175) Rabbit Polyclonal Antibody**

#### **Product data:**

Product Type:	Primary Antibodies
Applications:	WB
Recommended Dilution:	WB
Reactivity:	Human
Host:	Rabbit
Isotype:	IgG
Clonality:	Polyclonal
Immunogen:	The immunogen for anti-RNF175 antibody: synthetic peptide directed towards the middle region of human RNF175. Synthetic peptide located within the following region: YGLYGVMMGRDFAEICSDYMASTIGFYVSRLPTRSLSDNICAVCGQKII
Formulation:	Liquid. Purified antibody supplied in 1x PBS buffer with 0.09% (w/v) sodium azide and 2% sucrose.
Conjugation:	Unconjugated
Storage:	Store at -20°C as received.
Stability:	Stable for 12 months from date of receipt.
Predicted Protein Size:	19 kDa
Gene Name:	ring finger protein 175
Database Link:	<a href="#">NP_775933</a> <a href="#">Entrez Gene 285533 Human</a> <a href="#">Q8N4F7</a>
Background:	The function remains unknown.
Synonyms:	FLJ34190
Note:	Immunogen sequence homology: Human: 100%
Protein Families:	Transmembrane



[View online »](#)

**Product images:**

WB Suggested Anti-RNF175 Antibody Titration:  
1.25 ug/ml; Positive Control: HepG2 cell lysate