

## Product datasheet for **TA330520**

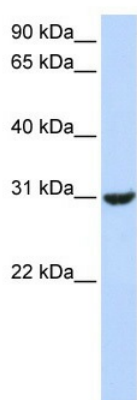
### RNF182 Rabbit Polyclonal Antibody

#### Product data:

Product Type:	Primary Antibodies
Recommended Dilution:	WB
Reactivity:	Human
Host:	Rabbit
Isotype:	IgG
Clonality:	Polyclonal
Immunogen:	The immunogen for anti-RNF182 antibody: synthetic peptide directed towards the middle region of human RNF182. Synthetic peptide located within the following region: LSSTPVVEFYRPASFDVTTVSHNWTWVNCTSLLFQTSIRVLVWLLGLLY
Formulation:	Liquid. Purified antibody supplied in 1x PBS buffer with 0.09% (w/v) sodium azide and 2% sucrose.
Conjugation:	Unconjugated
Storage:	Store at -20°C as received.
Stability:	Stable for 12 months from date of receipt.
Predicted Protein Size:	27 kDa
Gene Name:	ring finger protein 182
Database Link:	<a href="#">NP_689950</a> <a href="#">Entrez Gene 221687 Human</a> <a href="#">Q8N6D2</a>
Background:	RNF182 is a multi-pass membrane protein. It contains 1 RING-type zinc finger. The function of RNF182 remains unknown.
Synonyms:	FLJ40772; MGC33993
Note:	Immunogen sequence homology: Rat: 100%; Horse: 100%; Human: 100%; Mouse: 100%; Rabbit: 100%; Pig: 93%; Guinea pig: 92%; Bovine: 87%
Protein Families:	Druggable Genome, Transmembrane



[View online »](#)

**Product images:**

WB Suggested Anti-RNF182 Antibody Titration:  
0.2-1 ug/ml  
ELISA Titer: 1:62500  
Positive Control: Human Muscle