

## Product datasheet for **TA330517**

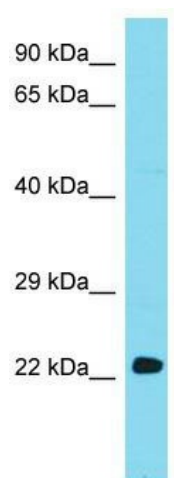
### Ube2e2 Rabbit Polyclonal Antibody

#### Product data:

Product Type:	Primary Antibodies
Applications:	WB
Recommended Dilution:	WB
Reactivity:	Mouse
Host:	Rabbit
Isotype:	IgG
Clonality:	Polyclonal
Immunogen:	The immunogen for Anti-Ube2e2 antibody is: synthetic peptide directed towards the N-terminal region of Mouse Ube2e2. Synthetic peptide located within the following region: TEAQRVDDSPSTSGGSSDGDQRESVQQEPDREQVQPKKKEGKISSKTAAK
Formulation:	Liquid. Purified antibody supplied in 1x PBS buffer with 0.09% (w/v) sodium azide and 2% sucrose. <i>Note that this product is shipped as lyophilized powder to China customers.</i>
Conjugation:	Unconjugated
Storage:	Store at -20°C as received.
Stability:	Stable for 12 months from date of receipt.
Predicted Protein Size:	22 kDa
Gene Name:	ubiquitin-conjugating enzyme E2E 2
Database Link:	<a href="#">NP_659088</a> <a href="#">Entrez Gene 218793 Mouse</a> <a href="#">Q91W82</a>
Background:	Ube2e2 accepts ubiquitin from the E1 complex and catalyzes its covalent attachment to other proteins. In vitro it catalyzes 'Lys-11'- and 'Lys-48'-, as well as 'Lys-63'-linked polyubiquitination.
Synonyms:	FLJ25157; OTTHUMP00000161048; OTTHUMP00000208342; UBCH8
Note:	Immunogen sequence homology: Dog: 100%; Pig: 100%; Human: 100%; Mouse: 100%; Sheep: 100%; Zebrafish: 85%; Rat: 77%; Horse: 77%; Bovine: 77%; Rabbit: 77%; Guinea pig: 77%



[View online »](#)

**Product images:**

Host: Rabbit; Target Name: Ube2e2; Sample  
Tissue: Mouse Heart lysates; Antibody Dilution:  
1.0ug/ml