

Product datasheet for TA330515

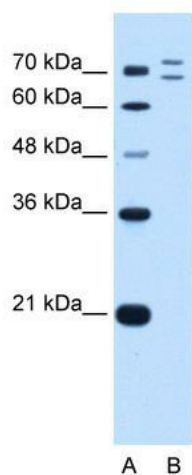
RNF168 Rabbit Polyclonal Antibody

Product data:

Product Type:	Primary Antibodies
Applications:	IHC, WB
Recommended Dilution:	WB, IHC
Reactivity:	Human
Host:	Rabbit
Isotype:	IgG
Clonality:	Polyclonal
Immunogen:	The immunogen for anti-RNF168 antibody: synthetic peptide directed towards the C terminal of human RNF168. Synthetic peptide located within the following region: PCFSAKRRKVSPESSPDQEETEINFQTQKLIDLEHLLFERHKQEEQDRLLA
Formulation:	Liquid. Purified antibody supplied in 1x PBS buffer with 0.09% (w/v) sodium azide and 2% sucrose.
Conjugation:	Unconjugated
Storage:	Store at -20°C as received.
Stability:	Stable for 12 months from date of receipt.
Predicted Protein Size:	65 kDa
Gene Name:	ring finger protein 168
Database Link:	NP_689830 Entrez Gene 165918 Human Q8IYW5
Background:	The function remains unknown.
Synonyms:	hRNF168
Note:	Immunogen sequence homology: Dog: 100%; Pig: 100%; Rat: 100%; Human: 100%; Mouse: 100%; Rabbit: 100%; Guinea pig: 100%; Horse: 93%; Bovine: 93%


[View online »](#)

Product images:



WB Suggested Anti-RNF168 Antibody Titration:
0.5 ug/ml; Positive Control: HepG2 cell lysate



Human Brain