

## Product datasheet for **TA330514**

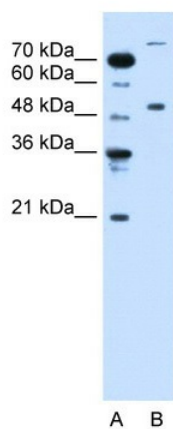
### TRIM42 Rabbit Polyclonal Antibody

#### Product data:

Product Type:	Primary Antibodies
Recommended Dilution:	WB
Reactivity:	Human
Host:	Rabbit
Isotype:	IgG
Clonality:	Polyclonal
Immunogen:	The immunogen for anti-TRIM42 antibody: synthetic peptide directed towards the C terminal of human TRIM42. Synthetic peptide located within the following region: VKTPGPVIYQTLVYPRAAKVYWTCPAEDVDSFEMEFYEVITSPNNVQM
Formulation:	Liquid. Purified antibody supplied in 1x PBS buffer with 0.09% (w/v) sodium azide and 2% sucrose.
Conjugation:	Unconjugated
Storage:	Store at -20°C as received.
Stability:	Stable for 12 months from date of receipt.
Predicted Protein Size:	80 kDa
Gene Name:	tripartite motif containing 42
Database Link:	<a href="#">NP_689829</a> <a href="#">Entrez Gene 287015 Human Q8IWZ5</a>
Background:	TRIM42 is a member of the tripartite motif (TRIM) family. The TRIM motif includes three zinc-binding domains, namely a RING, a B-box type 1 and a B-box type 2, and a coiled-coil region. This gene encodes a member of the tripartite motif (TRIM) family. The TRIM motif includes three zinc-binding domains, namely a RING, a B-box type 1 and a B-box type 2, and a coiled-coil region.
Synonyms:	PPP1R40; T4A1
Note:	Immunogen sequence homology: Dog: 100%; Pig: 100%; Rat: 100%; Horse: 100%; Human: 100%; Mouse: 100%; Bovine: 100%; Rabbit: 100%; Guinea pig: 100%



[View online »](#)

**Product images:**

WB Suggested Anti-TRIM42 Antibody Titration:  
0.2-1 ug/ml  
Positive Control: Jurkat cell lysate