

## Product datasheet for **TA330513**

### IBRDC1 (RNF217) Rabbit Polyclonal Antibody

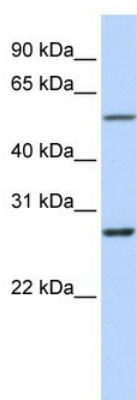
#### Product data:

Product Type:	Primary Antibodies
Recommended Dilution:	WB
Reactivity:	Human
Host:	Rabbit
Isotype:	IgG
Clonality:	Polyclonal
Immunogen:	The immunogen for anti-RNF217 antibody: synthetic peptide directed towards the middle region of human RNF217. Synthetic peptide located within the following region: GLALGAIADVIVEIKTYWNLISGRTRNQTQHLAPQPVLSDMLYCLKQV
Formulation:	Liquid. Purified antibody supplied in 1x PBS buffer with 0.09% (w/v) sodium azide and 2% sucrose.
Conjugation:	Unconjugated
Storage:	Store at -20°C as received.
Stability:	Stable for 12 months from date of receipt.
Predicted Protein Size:	32 kDa
Gene Name:	ring finger protein 217
Database Link:	<a href="#">NP_689766</a> <a href="#">Entrez Gene 154214 Human</a> <a href="#">Q8TC41</a>
Background:	RNF217 is an E3 ubiquitin-protein ligase which accepts ubiquitin from E2 ubiquitin-conjugating enzymes in the form of a thioester and then directly transfers the ubiquitin to targeted substrates.
Synonyms:	C6orf172; dj84N20.1; IBRDC1; OSTL
Note:	Immunogen sequence homology: Human: 100%; Yeast: 91%
Protein Families:	Transmembrane



[View online »](#)

## Product images:



WB Suggested Anti-RNF217 Antibody Titration:  
 0.2-1 ug/ml  
 ELISA Titer: 1:1562500  
 Positive Control: Human heart