

## Product datasheet for TA330512

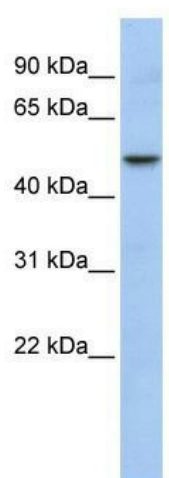
### WDSUB1 Rabbit Polyclonal Antibody

#### Product data:

Product Type:	Primary Antibodies
Applications:	WB
Recommended Dilution:	WB
Reactivity:	Human
Host:	Rabbit
Isotype:	IgG
Clonality:	Polyclonal
Immunogen:	The immunogen for anti-WDSUB1 antibody: synthetic peptide directed towards the middle region of human WDSUB1. Synthetic peptide located within the following region: KVKSLSSGIPDEFICPITRELMKDPVIASDGYSYEKEAMENWISKKKRTS
Formulation:	Liquid. Purified antibody supplied in 1x PBS buffer with 0.09% (w/v) sodium azide and 2% sucrose. <i>Note that this product is shipped as lyophilized powder to China customers.</i>
Conjugation:	Unconjugated
Storage:	Store at -20°C as received.
Stability:	Stable for 12 months from date of receipt.
Predicted Protein Size:	53 kDa
Gene Name:	WD repeat, sterile alpha motif and U-box domain containing 1
Database Link:	<a href="#">NP_689741</a> <a href="#">Entrez Gene 151525 Human</a> <a href="#">Q8N9V3</a>
Background:	WDSUB1 contains 1 SAM (sterile alpha motif) domain, 1 U-box domain and 7 WD repeats. The function of WDSUB1 remains unknown.
Synonyms:	UBOX6; WDSAM1
Note:	Immunogen sequence homology: Dog: 100%; Pig: 100%; Rat: 100%; Human: 100%; Mouse: 100%; Guinea pig: 100%; Horse: 93%; Bovine: 93%; Rabbit: 93%; Zebrafish: 92%; Goat: 83%
Protein Families:	Druggable Genome



[View online »](#)

**Product images:**

WB Suggested Anti-WDSUB1 Antibody Titration:  
0.2-1 ug/ml; ELISA Titer: 1:62500; Positive Control:  
MCF7 cell lysate