

Product datasheet for **TA330511**

WDSUB1 Rabbit Polyclonal Antibody

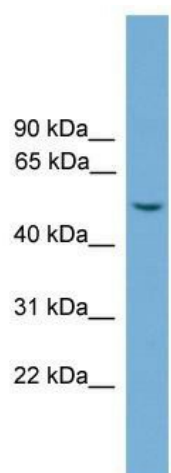
Product data:

Product Type:	Primary Antibodies
Applications:	WB
Recommended Dilution:	WB
Reactivity:	Human
Host:	Rabbit
Isotype:	IgG
Clonality:	Polyclonal
Immunogen:	The immunogen for anti-WDSUB1 antibody: synthetic peptide directed towards the middle region of human WDSUB1. Synthetic peptide located within the following region: DGKELLNLTKESLADDLKIESLGLRSKVLRLKIEELRTKVKSLSGGIPDEF
Formulation:	Liquid. Purified antibody supplied in 1x PBS buffer with 0.09% (w/v) sodium azide and 2% sucrose. <i>Note that this product is shipped as lyophilized powder to China customers.</i>
Conjugation:	Unconjugated
Storage:	Store at -20°C as received.
Stability:	Stable for 12 months from date of receipt.
Predicted Protein Size:	53 kDa
Gene Name:	WD repeat, sterile alpha motif and U-box domain containing 1
Database Link:	NP_689741 Entrez Gene 151525 Human Q8N9V3
Background:	WDSUB1 contains 1 SAM (sterile alpha motif) domain, 1 U-box domain and 7 WD repeats. The function of WDSUB1 remains unknown.
Synonyms:	UBOX6; WDSAM1
Note:	Immunogen sequence homology: Dog: 100%; Pig: 100%; Rat: 100%; Horse: 100%; Human: 100%; Mouse: 100%; Bovine: 100%; Guinea pig: 100%; Rabbit: 92%; Zebrafish: 85%
Protein Families:	Druggable Genome



[View online »](#)

Product images:



WB Suggested Anti-WDSUB1 Antibody Titration:
0.2-1 ug/ml; ELISA Titer: 1:312500; Positive
Control: 293T cell lysate