

## Product datasheet for **TA330508**

### RNF165 Rabbit Polyclonal Antibody

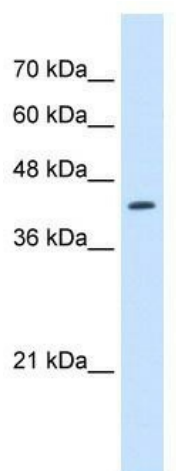
#### Product data:

Product Type:	Primary Antibodies
Applications:	WB
Recommended Dilution:	WB
Reactivity:	Human
Host:	Rabbit
Isotype:	IgG
Clonality:	Polyclonal
Immunogen:	The immunogen for anti-RNF165 antibody: synthetic peptide directed towards the N terminal of human RNF165. Synthetic peptide located within the following region: MVLVHVGYLVLPVFGSVRNRGAPFQRSQHPHATSCRHFHLGPPQPQLAP
Formulation:	Liquid. Purified antibody supplied in 1x PBS buffer with 0.09% (w/v) sodium azide and 2% sucrose. <i>Note that this product is shipped as lyophilized powder to China customers.</i>
Conjugation:	Unconjugated
Storage:	Store at -20°C as received.
Stability:	Stable for 12 months from date of receipt.
Predicted Protein Size:	39 kDa
Gene Name:	ring finger protein 165
Database Link:	<a href="#">NP_689683</a> <a href="#">Entrez Gene 494470 Human</a> <a href="#">Q6ZSG1</a>
Background:	RNF165 is encoded in regions involved in pericentric inversions in patients with bipolar affective disorder. Encoded in regions involved in pericentric inversions in patients with bipolar affective disorder. Encoded in regions involved in pericentric inversions in patients with bipolar affective disorder.
Synonyms:	ARKL2; RNF111L2
Note:	Immunogen sequence homology: Pig: 100%; Rat: 100%; Horse: 100%; Human: 100%; Mouse: 100%; Rabbit: 100%; Guinea pig: 100%; Bovine: 92%; Dog: 79%



[View online »](#)

## Product images:



WB Suggested Anti-RNF165 Antibody Titration:  
2.5ug/ml; Positive Control: Jurkat cell lysate