

Product datasheet for **TA330507**

LONRF1 Rabbit Polyclonal Antibody

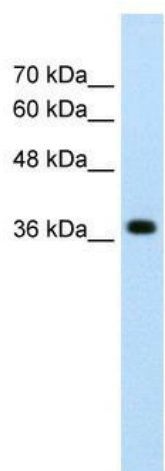
Product data:

Product Type:	Primary Antibodies
Applications:	IHC, WB
Recommended Dilution:	WB, IHC
Reactivity:	Human
Host:	Rabbit
Isotype:	IgG
Clonality:	Polyclonal
Immunogen:	The immunogen for anti-LONRF1 antibody: synthetic peptide directed towards the N terminal of human LONRF1. Synthetic peptide located within the following region: MSSPAVARTSPGGSREMAPAPQGRGRFWEVGGSGHRLERAAAESERWEL
Formulation:	Liquid. Purified antibody supplied in 1x PBS buffer with 0.09% (w/v) sodium azide and 2% sucrose.
Conjugation:	Unconjugated
Storage:	Store at -20°C as received.
Stability:	Stable for 12 months from date of receipt.
Predicted Protein Size:	46 kDa
Gene Name:	LON peptidase N-terminal domain and ring finger 1
Database Link:	NP_689484 Entrez Gene 91694 Human Q17RB8
Background:	The function remains unknown.
Synonyms:	RNF191
Note:	Immunogen sequence homology: Human: 100%; Rat: 86%; Mouse: 86%
Protein Families:	Druggable Genome, Protease, Transcription Factors

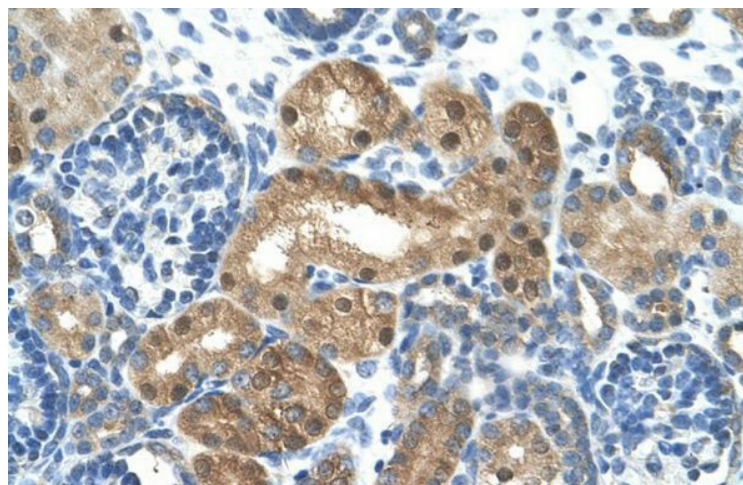


[View online »](#)

Product images:



WB Suggested Anti-LONRF1 Antibody Titration: 2.5ug/ml; Positive Control: HepG2 cell lysate



Human kidney