

Product datasheet for **TA330503**

NSMCE1 Rabbit Polyclonal Antibody

Product data:

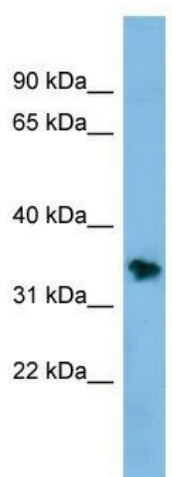
Product Type:	Primary Antibodies
Applications:	WB
Recommended Dilution:	WB
Reactivity:	Human
Host:	Rabbit
Isotype:	IgG
Clonality:	Polyclonal
Immunogen:	The immunogen for anti-NSMCE1 antibody: synthetic peptide directed towards the middle region of human NSMCE1. Synthetic peptide located within the following region: KKEAEQVLQKFVQNKWLIEKEGFTLHGRAILEMEQYIRETYPDVKICN
Formulation:	Liquid. Purified antibody supplied in 1x PBS buffer with 0.09% (w/v) sodium azide and 2% sucrose. <i>Note that this product is shipped as lyophilized powder to China customers.</i>
Conjugation:	Unconjugated
Storage:	Store at -20°C as received.
Stability:	Stable for 12 months from date of receipt.
Predicted Protein Size:	31 kDa
Gene Name:	NSE1 homolog, SMC5-SMC6 complex component
Database Link:	NP_659547 Entrez Gene 197370 Human Q8WV22
Background:	NSMCE1 is a probable component of the SMC5-SMC6 complex, a complex involved in DNA double-strand breaks by homologous recombination. The complex may promote sister chromatid homologous recombination by recruiting the SMC1-SMC3 cohesin complex to double-strand breaks.
Synonyms:	NSE1
Note:	Immunogen sequence homology: Pig: 100%; Rat: 100%; Goat: 100%; Human: 100%; Mouse: 100%; Bovine: 100%; Guinea pig: 100%; Dog: 93%; Horse: 93%; Rabbit: 93%



[View online »](#)

Protein Families: Druggable Genome

Product images:



WB Suggested Anti-NSMCE1 Antibody Titration:
0.2-1 ug/ml; ELISA Titer: 1:312500; Positive
Control: HepG2 cell lysate