

Product datasheet for **TA330501**

MARCHF8 Rabbit Polyclonal Antibody

Product data:

Product Type:	Primary Antibodies
Applications:	WB
Recommended Dilution:	WB
Reactivity:	Human
Host:	Rabbit
Isotype:	IgG
Clonality:	Polyclonal
Immunogen:	The immunogen for anti-MARCH8 antibody: synthetic peptide directed towards the middle region of human MARCH8. Synthetic peptide located within the following region: YVQCKVYVQLWKRLKAYNRVIYVQNCPETSKKNIFEKSPLTEPNFENKHG
Formulation:	Liquid. Purified antibody supplied in 1x PBS buffer with 0.09% (w/v) sodium azide and 2% sucrose. <i>Note that this product is shipped as lyophilized powder to China customers.</i>
Conjugation:	Unconjugated
Storage:	Store at -20°C as received.
Stability:	Stable for 12 months from date of receipt.
Predicted Protein Size:	33 kDa
Gene Name:	membrane associated ring-CH-type finger 8
Database Link:	NP_659458 Entrez Gene 220972 Human Q5T0T0
Background:	MARCH8 is an E3 ubiquitin-protein ligase that may regulate immune responses by promoting ubiquitination of MHC-II and CD86, which leads to their subsequent endocytosis and lysosomal degradation. It may also promote ubiquitination and endocytosis of TFRC and FAS. E3 ubiquitin ligases accept ubiquitin from an E2 ubiquitin-conjugating enzyme in the form of a thioester and then directly transfer the ubiquitin to targeted substrates.
Synonyms:	c-MIR; CMIR; MARCH-VIII; MIR; RNF178

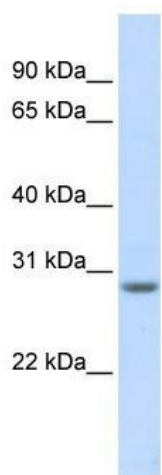


[View online »](#)

Note: Immunogen sequence homology: Dog: 100%; Pig: 100%; Rat: 100%; Horse: 100%; Human: 100%; Mouse: 100%; Bovine: 100%; Rabbit: 100%; Zebrafish: 100%; Guinea pig: 100%

Protein Families: Druggable Genome, Transmembrane

Product images:



WB Suggested Anti-MARCH8 Antibody Titration:
0.2-1 ug/ml; ELISA Titer: 1:12500; Positive Control:
Human Muscle