

Product datasheet for **TA330500**

RNF133 Rabbit Polyclonal Antibody

Product data:

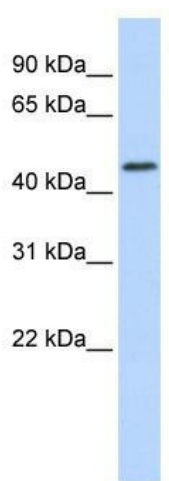
Product Type:	Primary Antibodies
Applications:	WB
Recommended Dilution:	WB
Reactivity:	Human
Host:	Rabbit
Isotype:	IgG
Clonality:	Polyclonal
Immunogen:	The immunogen for anti-RNF133 antibody: synthetic peptide directed towards the N terminal of human RNF133. Synthetic peptide located within the following region: VWWMAYMNISFHVGNHVLSELGETGVFGRSSTLKRIVAGVIVPPEGKIQNA
Formulation:	Liquid. Purified antibody supplied in 1x PBS buffer with 0.09% (w/v) sodium azide and 2% sucrose.
Conjugation:	Unconjugated
Storage:	Store at -20°C as received.
Stability:	Stable for 12 months from date of receipt.
Predicted Protein Size:	42 kDa
Gene Name:	ring finger protein 133
Database Link:	NP_631914 Entrez Gene 168433 Human Q8WVZ7
Background:	RNF133 contains a RING finger domain, a motif present in a variety of functionally distinct proteins and known to be involved in protein-protein and protein-DNA interactions. The protein encoded by this gene contains a RING finger domain, a motif present in a variety of functionally distinct proteins and known to be involved in protein-protein and protein-DNA interactions. This gene has no intron.
Synonyms:	MGC27072
Note:	Immunogen sequence homology: Rat: 100%; Horse: 100%; Human: 100%; Mouse: 100%; Rabbit: 92%



[View online »](#)

Protein Families: Druggable Genome, Protease, Transmembrane

Product images:



WB Suggested Anti-RNF133 Antibody Titration:
0.2-1 ug/ml; ELISA Titer: 1:312500; Positive
Control: Human brain