

Product datasheet for **TA330499**

TRIM43 Rabbit Polyclonal Antibody

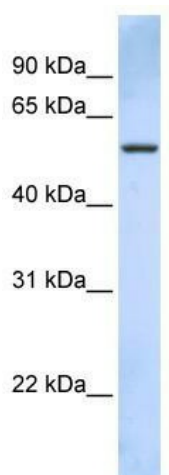
Product data:

Product Type:	Primary Antibodies
Applications:	WB
Recommended Dilution:	WB
Reactivity:	Human
Host:	Rabbit
Isotype:	IgG
Clonality:	Polyclonal
Immunogen:	The immunogen for anti-TRIM43 antibody: synthetic peptide directed towards the C terminal of human TRIM43. Synthetic peptide located within the following region: NSTMVNSEIDIFLLLCLKVDNHFNLLTSPVFPHYIEKPLGRVGVFLDFES
Formulation:	Liquid. Purified antibody supplied in 1x PBS buffer with 0.09% (w/v) sodium azide and 2% sucrose. <i>Note that this product is shipped as lyophilized powder to China customers.</i>
Conjugation:	Unconjugated
Storage:	Store at -20°C as received.
Stability:	Stable for 12 months from date of receipt.
Predicted Protein Size:	52 kDa
Gene Name:	tripartite motif containing 43
Database Link:	NP_620155 Entrez Gene 129868 Human Q96BQ3
Background:	TRIM43 belongs to the TRIM/RBCC family. It contains 1 B box-type zinc finger, 1 B30.2/SPRY domain and 1 RING-type zinc finger. The exact function of TRIM43 remains unknown.
Synonyms:	TRIM43A
Note:	Immunogen sequence homology: Human: 100%
Protein Families:	Druggable Genome



[View online »](#)

Product images:



WB Suggested Anti-TRIM43 Antibody Titration:
0.2-1 ug/ml; ELISA Titer: 1:312500; Positive
Control: 721_B cell lysate