

## Product datasheet for **TA330488**

### PCGF1 Rabbit Polyclonal Antibody

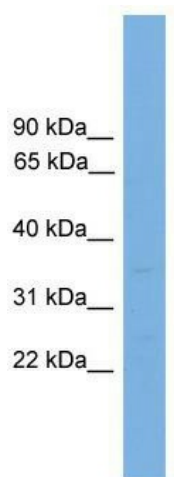
#### Product data:

Product Type:	Primary Antibodies
Applications:	WB
Recommended Dilution:	WB
Reactivity:	Human
Host:	Rabbit
Isotype:	IgG
Clonality:	Polyclonal
Immunogen:	The immunogen for anti-PCGF1 antibody: synthetic peptide directed towards the middle region of human PCGF1. Synthetic peptide located within the following region: PALSNLGLPFSSFDHSKAHYYRYDEQLNLCLERLSSGKDKNKSVLQNKYY
Formulation:	Liquid. Purified antibody supplied in 1x PBS buffer with 0.09% (w/v) sodium azide and 2% sucrose. <i>Note that this product is shipped as lyophilized powder to China customers.</i>
Conjugation:	Unconjugated
Storage:	Store at -20°C as received.
Stability:	Stable for 12 months from date of receipt.
Predicted Protein Size:	30 kDa
Gene Name:	polycomb group ring finger 1
Database Link:	<a href="#">NP_116062</a> <a href="#">Entrez Gene 84759 Human</a> <a href="#">Q9BSM1</a>
Background:	PCGF1 is a mammalian homolog of the Drosophila polycomb group genes, which act as transcriptional repressors to regulate anterior-posterior patterning in early embryonic development.
Synonyms:	2010002K04Rik; NSPC1; RNF3A-2; RNF68
Note:	Immunogen sequence homology: Dog: 100%; Pig: 100%; Rat: 100%; Horse: 100%; Human: 100%; Mouse: 100%; Bovine: 100%; Rabbit: 100%; Guinea pig: 93%; Zebrafish: 75%



[View online »](#)

## Product images:



WB Suggested Anti-PCGF1 Antibody Titration: 0.2-1 ug/ml; Positive Control: HepG2 cell lysate