

## Product datasheet for **TA330483**

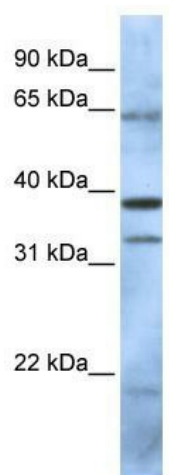
### PCGF5 Rabbit Polyclonal Antibody

#### Product data:

Product Type:	Primary Antibodies
Applications:	WB
Recommended Dilution:	WB
Reactivity:	Human
Host:	Rabbit
Isotype:	IgG
Clonality:	Polyclonal
Immunogen:	The immunogen for anti-PCGF5 antibody: synthetic peptide directed towards the N terminal of human PCGF5. Synthetic peptide located within the following region: ATQRKHLVKDFNPYITCYICKGYLIKPTTVTECLHTFCKTCIVQHFEDSN
Formulation:	Liquid. Purified antibody supplied in 1x PBS buffer with 0.09% (w/v) sodium azide and 2% sucrose. <i>Note that this product is shipped as lyophilized powder to China customers.</i>
Conjugation:	Unconjugated
Storage:	Store at -20°C as received.
Stability:	Stable for 12 months from date of receipt.
Predicted Protein Size:	30 kDa
Gene Name:	polycomb group ring finger 5
Database Link:	<a href="#">NP_115749</a> <a href="#">Entrez Gene 84333 Human</a> <a href="#">Q86SE9</a>
Background:	PCGF5 contains 1 RING-type zinc finger. It is probable component of some Polycomb group (PcG) multiprotein complex, a complex required to maintain the transcriptionally repressive state of some genes.
Synonyms:	RNF159
Note:	Immunogen sequence homology: Dog: 100%; Pig: 100%; Rat: 100%; Horse: 100%; Human: 100%; Mouse: 100%; Bovine: 100%; Rabbit: 100%; Guinea pig: 100%; Goat: 93%; Zebrafish: 79%



[View online »](#)

**Product images:**

WB Suggested Anti-PCGF5 Antibody Titration: 0.2-1 ug/ml; ELISA Titer: 1:1562500; Positive Control: 293T cell lysate