

Product datasheet for TA330481

PCGF6 Rabbit Polyclonal Antibody

Product data:

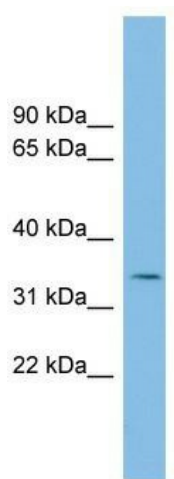
Product Type:	Primary Antibodies
Applications:	WB
Recommended Dilution:	WB
Reactivity:	Human
Host:	Rabbit
Isotype:	IgG
Clonality:	Polyclonal
Immunogen:	The immunogen for anti-PCGF6 antibody: synthetic peptide directed towards the middle region of human PCGF6. Synthetic peptide located within the following region: TQPLYNISANEGTGHFKPLEKKFVRVSGEATIGHVEKFLRRKMGLDPACQ
Formulation:	Liquid. Purified antibody supplied in 1x PBS buffer with 0.09% (w/v) sodium azide and 2% sucrose.
Conjugation:	Unconjugated
Storage:	Store at -20°C as received.
Stability:	Stable for 12 months from date of receipt.
Predicted Protein Size:	30 kDa
Gene Name:	polycomb group ring finger 6
Database Link:	NP_115530 Entrez Gene 84108 Human Q9BYE7
Background:	The protein encoded by this gene contains a RING finger motif, which is most closely related to those of polycomb group (PcG) proteins RNF110/MEL-18 and BMI1. PcG proteins are known to form protein complexes and function as transcription repressors. This protein has been shown to interact with some PcG proteins and act as a transcription repressor. The activity of this protein is found to be regulated by cell cycle dependent phosphorylation. Alternatively spliced transcript variants encoding different isoforms have been identified.
Synonyms:	MBLR; RNF134
Note:	Immunogen sequence homology: Human: 100%



[View online »](#)

Protein Families: Transcription Factors

Product images:



WB Suggested Anti-PCGF6 Antibody Titration: 0.2-1 ug/ml; ELISA Titer: 1:62500; Positive Control: NCI-H226 cell lysate