

## Product datasheet for **TA330480**

### ITCH Rabbit Polyclonal Antibody

#### Product data:

Product Type:	Primary Antibodies
Applications:	WB
Recommended Dilution:	WB
Reactivity:	Human
Host:	Rabbit
Isotype:	IgG
Clonality:	Polyclonal
Immunogen:	The immunogen for anti-ITCH antibody: synthetic peptide directed towards the N terminal of human ITCH. Synthetic peptide located within the following region: QLESEVVTNGETTCSASQNDGSRKDETRVSTNGSDDPEDAGAGENR
Formulation:	Liquid. Purified antibody supplied in 1x PBS buffer with 0.09% (w/v) sodium azide and 2% sucrose. <i>Note that this product is shipped as lyophilized powder to China customers.</i>
Conjugation:	Unconjugated
Storage:	Store at -20°C as received.
Stability:	Stable for 12 months from date of receipt.
Predicted Protein Size:	99 kDa
Gene Name:	itchy E3 ubiquitin protein ligase
Database Link:	<a href="#">NP_113671</a> <a href="#">Entrez Gene 83737 Human</a> <a href="#">Q96J02</a>
Background:	This gene encodes a member of the Nedd4 family of HECT domain E3 ubiquitin ligases. HECT domain E3 ubiquitin ligases transfer ubiquitin from E2 ubiquitin-conjugating enzymes to protein substrates, thus targeting specific proteins for lysosomal degradation. The encoded protein plays a role in multiple cellular processes including erythroid and lymphoid cell differentiation and the regulation of immune responses. Mutations in this gene are a cause of syndromic multisystem autoimmune disease. Alternatively spliced transcript variants encoding multiple isoforms have been observed for this gene. [provided by RefSeq, Mar 2012]



[View online »](#)

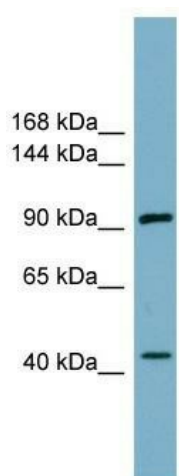
**Synonyms:** ADMFD; AIF4; AIP4; dj468O1.1; NAPP1

**Note:** Immunogen sequence homology: Human: 100%; Pig: 93%; Rabbit: 93%; Guinea pig: 93%; Dog: 92%; Rat: 86%; Horse: 86%; Bovine: 86%

**Protein Families:** Druggable Genome, Transcription Factors

**Protein Pathways:** Endocytosis, Ubiquitin mediated proteolysis

### Product images:



WB Suggested Anti-ITCH Antibody Titration: 0.2-1 ug/ml; ELISA Titer: 1:312500; Positive Control: COLO205 cell lysate