

Product datasheet for **TA330479**

RNF146 Rabbit Polyclonal Antibody

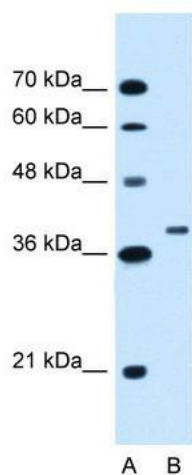
Product data:

Product Type:	Primary Antibodies
Applications:	WB
Recommended Dilution:	WB
Reactivity:	Human
Host:	Rabbit
Isotype:	IgG
Clonality:	Polyclonal
Immunogen:	The immunogen for anti-RNF146 antibody: synthetic peptide directed towards the C terminal of human RNF146. Synthetic peptide located within the following region: AVVAQHSLTQQRLVSNANQTPDRSDRSVAGGGTVSVSVRSRRP
Formulation:	Liquid. Purified antibody supplied in 1x PBS buffer with 0.09% (w/v) sodium azide and 2% sucrose. <i>Note that this product is shipped as lyophilized powder to China customers.</i>
Conjugation:	Unconjugated
Storage:	Store at -20°C as received.
Stability:	Stable for 12 months from date of receipt.
Predicted Protein Size:	39 kDa
Gene Name:	ring finger protein 146
Database Link:	NP_112225 Entrez Gene 81847 Human Q9NTX7
Background:	The function remains unknown.
Synonyms:	dj351K20.1
Note:	Immunogen sequence homology: Rat: 100%; Horse: 100%; Human: 100%; Mouse: 100%; Pig: 93%; Guinea pig: 93%; Dog: 86%
Protein Families:	Druggable Genome



[View online »](#)

Product images:



WB Suggested Anti-RNF146 Antibody Titration:
1.25 ug/ml; Positive Control: HepG2 cell lysate