

## Product datasheet for **TA330478**

### RNF170 Rabbit Polyclonal Antibody

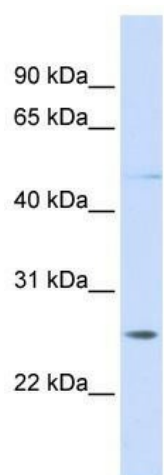
#### Product data:

Product Type:	Primary Antibodies
Applications:	WB
Recommended Dilution:	WB
Reactivity:	Human
Host:	Rabbit
Isotype:	IgG
Clonality:	Polyclonal
Immunogen:	The immunogen for anti-RNF170 antibody: synthetic peptide directed towards the C terminal of human RNF170. Synthetic peptide located within the following region: FYLISPLDFVPEALFGILGFLDDFFVIFLLLIYISIMYREVITQRLTR
Formulation:	Liquid. Purified antibody supplied in 1x PBS buffer with 0.09% (w/v) sodium azide and 2% sucrose. <i>Note that this product is shipped as lyophilized powder to China customers.</i>
Conjugation:	Unconjugated
Storage:	Store at -20°C as received.
Stability:	Stable for 12 months from date of receipt.
Predicted Protein Size:	30 kDa
Gene Name:	ring finger protein 170
Database Link:	<a href="#">NP_112216</a> <a href="#">Entrez Gene 81790 Human</a> <a href="#">Q96K19</a>
Background:	RNF170 is a multi-pass membrane proteinPotential. It contains 1 RING-type zinc finger. The exact function of RNF170 remains unknown.
Synonyms:	ADSA; SNAX1
Note:	Immunogen sequence homology: Dog: 100%; Pig: 100%; Rat: 100%; Horse: 100%; Human: 100%; Mouse: 100%; Bovine: 100%; Rabbit: 100%; Guinea pig: 100%
Protein Families:	Druggable Genome, Transmembrane



[View online »](#)

## Product images:



WB Suggested Anti-RNF170 Antibody Titration:  
0.2-1 ug/ml; ELISA Titer: 1:62500; Positive Control:  
Jurkat cell lysate