

Product datasheet for TA330477

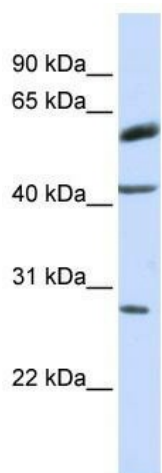
RNF170 Rabbit Polyclonal Antibody

Product data:

Product Type:	Primary Antibodies
Applications:	WB
Recommended Dilution:	WB
Reactivity:	Human
Host:	Rabbit
Isotype:	IgG
Clonality:	Polyclonal
Immunogen:	The immunogen for anti-RNF170 antibody: synthetic peptide directed towards the middle region of human RNF170. Synthetic peptide located within the following region: CIAYWRYGSLWLGAI SCPICRQTVLLLLTVFGEDDQSQDVLRLHQDINDY
Formulation:	Liquid. Purified antibody supplied in 1x PBS buffer with 0.09% (w/v) sodium azide and 2% sucrose. <i>Note that this product is shipped as lyophilized powder to China customers.</i>
Conjugation:	Unconjugated
Storage:	Store at -20°C as received.
Stability:	Stable for 12 months from date of receipt.
Predicted Protein Size:	30 kDa
Gene Name:	ring finger protein 170
Database Link:	NP_112216 Entrez Gene 81790 Human Q96K19
Background:	RNF170 is a multi-pass membrane proteinPotential. It contains 1 RING-type zinc finger. The exact function of RNF170 remains unknown.
Synonyms:	ADSA; SNAX1
Note:	Immunogen sequence homology: Human: 100%; Rat: 93%; Mouse: 93%; Rabbit: 93%; Bovine: 91%; Dog: 81%; Horse: 75%
Protein Families:	Druggable Genome, Transmembrane



[View online »](#)

Product images:

WB Suggested Anti-RNF170 Antibody Titration:
0.2-1 ug/ml; ELISA Titer: 1:312500; Positive
Control: MCF7 cell lysate