

Product datasheet for **TA330475**

RNF39 Rabbit Polyclonal Antibody

Product data:

Product Type:	Primary Antibodies
Applications:	IHC, WB
Recommended Dilution:	WB, IHC
Reactivity:	Human
Host:	Rabbit
Isotype:	IgG
Clonality:	Polyclonal
Immunogen:	The immunogen for anti-RNF39 antibody: synthetic peptide directed towards the N terminal of human RNF39. Synthetic peptide located within the following region: EGRKAAKVNAGVGEKGIYTASSRGGPPSARSKAVTVVAEGAASRSWLSMD
Formulation:	Liquid. Purified antibody supplied in 1x PBS buffer with 0.09% (w/v) sodium azide and 2% sucrose. <i>Note that this product is shipped as lyophilized powder to China customers.</i>
Conjugation:	Unconjugated
Storage:	Store at -20°C as received.
Stability:	Stable for 12 months from date of receipt.
Predicted Protein Size:	39 kDa
Gene Name:	ring finger protein 39
Database Link:	NP_079512 Entrez Gene 80352 Human Q9H2S5
Background:	Its gene lies within the major histocompatibility complex class I region on chromosome 6. Studies of a similar rat protein suggest that RNF39 plays a role in an early phase of synaptic plasticity. Its gene lies within the major histocompatibility complex class I region on chromosome 6. This gene lies within the major histocompatibility complex class I region on chromosome 6. Studies of a similar rat protein suggest that this gene encodes a protein that plays a role in an early phase of synaptic plasticity. Alternative splicing results in three transcript variants encoding different isoforms.



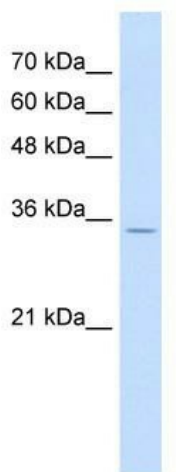
[View online »](#)

Synonyms: HZF; HZFW; LIRF

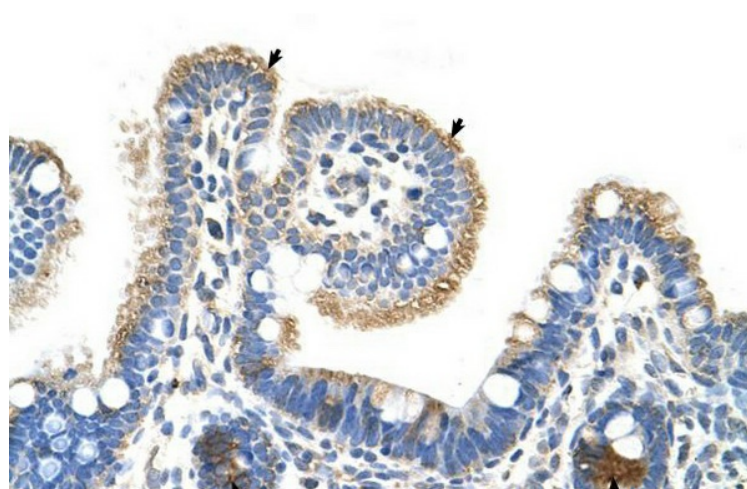
Note: Immunogen sequence homology: Human: 100%; Horse: 92%

Protein Families: Druggable Genome

Product images:



WB Suggested Anti-RNF39 Antibody Titration: 0.2-1 ug/ml; Positive Control: Jurkat cell lysate



Human Intestine