

Product datasheet for **TA330470**

Rnf122 Rabbit Polyclonal Antibody

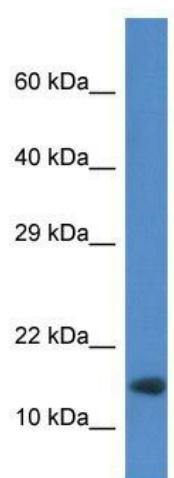
Product data:

| | |
|-------------------------|--|
| Product Type: | Primary Antibodies |
| Applications: | WB |
| Recommended Dilution: | WB |
| Reactivity: | Mouse |
| Host: | Rabbit |
| Isotype: | IgG |
| Clonality: | Polyclonal |
| Immunogen: | The immunogen for anti-Rnf122 antibody: synthetic peptide corresponding to a region of Mouse. Synthetic peptide located within the following region: SLIFCCYFISKLRNQAQSERYGYKEVVLKGDAKKLQLYGTCAVCLEDFKG |
| Formulation: | Liquid. Purified antibody supplied in 1x PBS buffer with 0.09% (w/v) sodium azide and 2% sucrose. <i>Note that this product is shipped as lyophilized powder to China customers.</i> |
| Conjugation: | Unconjugated |
| Storage: | Store at -20°C as received. |
| Stability: | Stable for 12 months from date of receipt. |
| Predicted Protein Size: | 17 kDa |
| Gene Name: | ring finger protein 122 |
| Database Link: | NP_780345 Entrez Gene 68867 Mouse Q8BP31 |
| Background: | The function of this protein remains unknown. |
| Synonyms: | FLJ12526; MGC126622 |
| Note: | Immunogen sequence homology: Dog: 100%; Pig: 100%; Rat: 100%; Goat: 100%; Horse: 100%; Human: 100%; Mouse: 100%; Bovine: 100%; Rabbit: 100%; Guinea pig: 93%; Zebrafish: 85% |



[View online »](#)

Product images:



WB Suggested Anti-Rnf122 Antibody; Titration:
1.0 ug/ml; Positive Control: Mouse Heart