

## Product datasheet for **TA330468**

### LONRF3 Rabbit Polyclonal Antibody

#### Product data:

Product Type:	Primary Antibodies
Applications:	WB
Recommended Dilution:	WB
Reactivity:	Human
Host:	Rabbit
Isotype:	IgG
Clonality:	Polyclonal
Immunogen:	The immunogen for anti-LONRF3 antibody: synthetic peptide directed towards the N terminal of human LONRF3. Synthetic peptide located within the following region: QPPPLRVNVVLSGLLGKLFPGPARASQLRHEGNRLYRERQVEAALLKYN
Formulation:	Liquid. Purified antibody supplied in 1x PBS buffer with 0.09% (w/v) sodium azide and 2% sucrose. <i>Note that this product is shipped as lyophilized powder to China customers.</i>
Conjugation:	Unconjugated
Storage:	Store at -20°C as received.
Stability:	Stable for 12 months from date of receipt.
Predicted Protein Size:	84 kDa
Gene Name:	LON peptidase N-terminal domain and ring finger 3
Database Link:	<a href="#">NP_001027026</a> <a href="#">Entrez Gene 79836 Human</a> <a href="#">Q496Y0</a>
Background:	LONRF3 contains a RING finger domain, a motif present in a variety of functionally distinct proteins and known to be involved in protein-protein and protein-DNA interactions. Multiple alternatively spliced transcript variants have been suggested, but their full length natures are not clear. The protein encoded by this gene contains a RING finger domain, a motif present in a variety of functionally distinct proteins and known to be involved in protein-protein and protein-DNA interactions. Multiple alternatively spliced transcript variants have been suggested, but their full length natures are not clear.



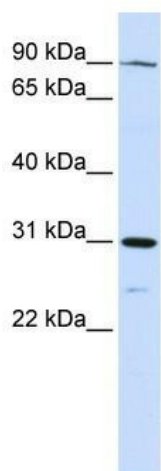
[View online »](#)

**Synonyms:** RNF127

**Note:** Immunogen sequence homology: Dog: 100%; Pig: 100%; Rat: 100%; Horse: 100%; Human: 100%; Mouse: 100%; Bovine: 100%; Rabbit: 100%

**Protein Families:** Druggable Genome, Protease

**Product images:**



WB Suggested Anti-LONRF3 Antibody Titration:  
0.2-1 ug/ml; ELISA Titer: 1:312500; Positive  
Control: Human Liver