

Product datasheet for **TA330467**

C13orf7 (RNF219) Rabbit Polyclonal Antibody

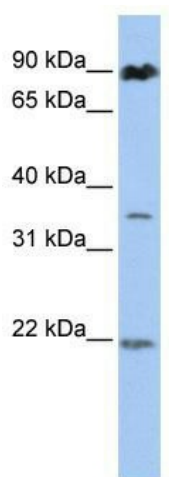
Product data:

Product Type:	Primary Antibodies
Applications:	WB
Recommended Dilution:	WB
Reactivity:	Human
Host:	Rabbit
Isotype:	IgG
Clonality:	Polyclonal
Immunogen:	The immunogen for anti-C13orf7 antibody: synthetic peptide directed towards the N terminal of human C13orf7. Synthetic peptide located within the following region: LVTDNPSKINPETVAEWKKKLRTANEIYEKVKDDVDKLKEANKKLKLENG
Formulation:	Liquid. Purified antibody supplied in 1x PBS buffer with 0.09% (w/v) sodium azide and 2% sucrose.
Conjugation:	Unconjugated
Storage:	Store at -20°C as received.
Stability:	Stable for 12 months from date of receipt.
Predicted Protein Size:	80 kDa
Gene Name:	ring finger protein 219
Database Link:	NP_078822 Entrez Gene 79596 Human Q5W0B1
Background:	The function of C13orf7 remains unknown.
Synonyms:	C13orf7
Note:	Immunogen sequence homology: Dog: 100%; Pig: 100%; Rat: 100%; Horse: 100%; Human: 100%; Mouse: 100%; Bovine: 100%; Rabbit: 100%; Guinea pig: 93%



[View online »](#)

Product images:



WB Suggested Anti-C13orf7 Antibody Titration:
0.2-1 ug/ml; ELISA Titer: 1:312500; Positive
Control: 721_B cell lysate RNF219 is supported by
BioGPS gene expression data to be expressed in
721_B