

## Product datasheet for **TA330466**

### E3 ubiquitin protein ligase MUL1 (MUL1) Rabbit Polyclonal Antibody

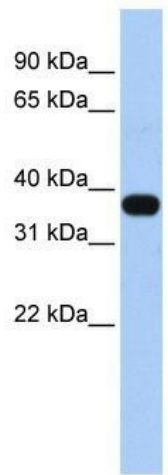
#### Product data:

Product Type:	Primary Antibodies
Applications:	WB
Recommended Dilution:	WB
Reactivity:	Human
Host:	Rabbit
Isotype:	IgG
Clonality:	Polyclonal
Immunogen:	The immunogen for anti-C1orf166 antibody: synthetic peptide directed towards the middle region of human C1orf166. Synthetic peptide located within the following region: GMQYYLSSQDFDLSLLQRQESSVRLWKVLALVFGFATCATLFFILRKQYLQ
Formulation:	Liquid. Purified antibody supplied in 1x PBS buffer with 0.09% (w/v) sodium azide and 2% sucrose. <i>Note that this product is shipped as lyophilized powder to China customers.</i>
Conjugation:	Unconjugated
Storage:	Store at -20°C as received.
Stability:	Stable for 12 months from date of receipt.
Predicted Protein Size:	40 kDa
Gene Name:	mitochondrial E3 ubiquitin protein ligase 1
Database Link:	<a href="#">NP_078820</a> <a href="#">Entrez Gene 79594 Human</a> <a href="#">Q969V5</a>
Background:	The function of C1orf166 remains unknown.
Synonyms:	C1orf166; GIDE; MAPL; MULAN; RNF218
Note:	Immunogen sequence homology: Dog: 100%; Pig: 100%; Rat: 100%; Horse: 100%; Human: 100%; Bovine: 100%; Rabbit: 100%; Guinea pig: 100%; Mouse: 93%
Protein Families:	Druggable Genome, Transmembrane



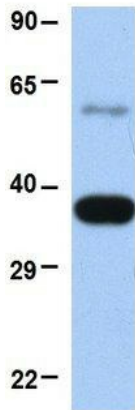
[View online »](#)

Product images:



WB Suggested Anti-C1orf166 Antibody Titration:  
0.2-1 ug/ml; ELISA Titer: 1:312500; Positive  
Control: Human heart

**C1orf166**



Rabbit Anti-C1orf166  
Sample Type: Human Fetal Heart  
Antibody Concentration: 1ug/mL

Host: Rabbit; Target Name: C1orf166; Sample  
Tissue: Human Fetal Heart; Antibody Dilution:  
1.0ug/ml