

## Product datasheet for **TA330459**

### RNF25 Rabbit Polyclonal Antibody

#### Product data:

Product Type:	Primary Antibodies
Applications:	IHC, WB
Recommended Dilution:	WB, IHC
Reactivity:	Human
Host:	Rabbit
Isotype:	IgG
Clonality:	Polyclonal
Immunogen:	The immunogen for anti-RNF25 antibody: synthetic peptide directed towards the middle region of human RNF25. Synthetic peptide located within the following region: CREPLVYDLASLKAPEPQQPMELYQPSAESLRQQEERKRLYQRQQERGG
Formulation:	Liquid. Purified antibody supplied in 1x PBS buffer with 0.09% (w/v) sodium azide and 2% sucrose.
Conjugation:	Unconjugated
Storage:	Store at -20°C as received.
Stability:	Stable for 12 months from date of receipt.
Predicted Protein Size:	51 kDa
Gene Name:	ring finger protein 25
Database Link:	<a href="#">NP_071898</a> <a href="#">Entrez Gene 64320 Human</a> <a href="#">Q96BH1</a>
Background:	RNF25 contains a RING finger motif. The mouse counterpart of this protein has been shown to interact with RelA, the p65 subunit of NF-kappaB (NFKB), and modulate NFKB-mediated transcription activity. The mouse protein also binds ubiquitin-conjugating enzymes (E2s) and is a substrate for E2-dependent ubiquitination. The protein encoded by this gene contains a RING finger motif. The mouse counterpart of this protein has been shown to interact with RelA, the p65 subunit of NF-kappaB (NFKB), and modulate NFKB-mediated transcription activity. The mouse protein also binds ubiquitin-conjugating enzymes (E2s) and is a substrate for E2-dependent ubiquitination.



[View online »](#)

**Synonyms:** AO7

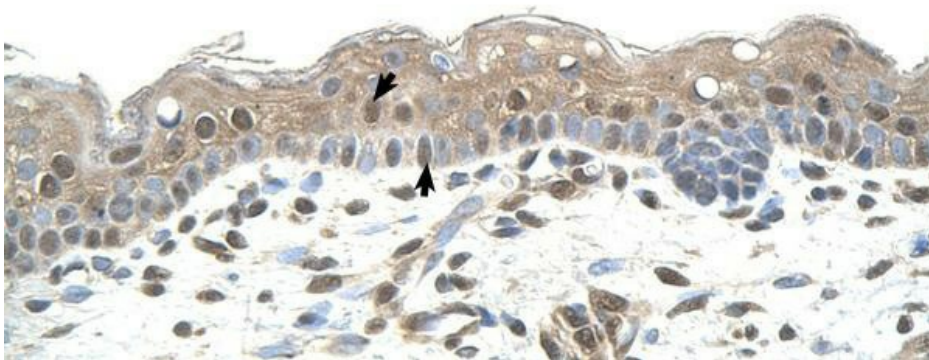
**Note:** Immunogen sequence homology: Dog: 100%; Pig: 100%; Rat: 100%; Human: 100%; Mouse: 100%; Guinea pig: 100%; Bovine: 93%; Rabbit: 92%; Horse: 86%

**Protein Families:** Druggable Genome

**Product images:**



WB Suggested Anti-RNF25 Antibody Titration: 0.5 ug/ml; Positive Control: HepG2 cell lysate RNF25 is supported by BioGPS gene expression data to be expressed in HepG2



Human Skin