

Product datasheet for **TA330457**

DTX2 Rabbit Polyclonal Antibody

Product data:

Product Type:	Primary Antibodies
Applications:	WB
Recommended Dilution:	WB
Reactivity:	Human
Host:	Rabbit
Isotype:	IgG
Clonality:	Polyclonal
Immunogen:	The immunogen for anti-DTX2 antibody: synthetic peptide directed towards the C terminal of human DTX2. Synthetic peptide located within the following region: EDCGTILIVYSIPHGIQGPEHPNPGKPFTARGFPRQCYPDQAQGRKLVLE
Formulation:	Liquid. Purified antibody supplied in 1x PBS buffer with 0.09% (w/v) sodium azide and 2% sucrose. <i>Note that this product is shipped as lyophilized powder to China customers.</i>
Conjugation:	Unconjugated
Storage:	Store at -20°C as received.
Stability:	Stable for 12 months from date of receipt.
Predicted Protein Size:	62 kDa
Gene Name:	deltex 2, E3 ubiquitin ligase
Database Link:	NP_001096066 Entrez Gene 113878 Human Q86UW9
Background:	DTX2 is a regulator of Notch signaling, a signaling pathway involved in cell-cell communications that regulates a broad spectrum of cell-fate determinations. DTX2 probably acts both as a positive and negative regulator of Notch, depending on the developmental and cell context and mediates the antineural activity of Notch, possibly by inhibiting the transcriptional activation mediated by MATCH1. It also functions as an ubiquitin ligase protein in vitro, suggesting that it may regulate the Notch pathway via some ubiquitin ligase activity.



[View online »](#)

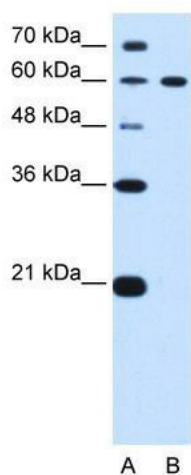
Synonyms: RNF58

Note: Immunogen sequence homology: Dog: 100%; Pig: 100%; Rat: 100%; Goat: 100%; Horse: 100%; Human: 100%; Mouse: 100%; Bovine: 100%; Rabbit: 100%; Guinea pig: 100%; Zebrafish: 93%

Protein Families: Druggable Genome

Protein Pathways: Notch signaling pathway

Product images:



WB Suggested Anti-DTX2 Antibody Titration: 0.2-1 ug/ml; Positive Control: HepG2 cell lysate