

Product datasheet for **TA330456**

SH3MD2 (SH3RF1) Rabbit Polyclonal Antibody

Product data:

Product Type:	Primary Antibodies
Applications:	WB
Recommended Dilution:	WB
Reactivity:	Human
Host:	Rabbit
Isotype:	IgG
Clonality:	Polyclonal
Immunogen:	The immunogen for anti-SH3RF1 antibody: synthetic peptide directed towards the middle region of human SH3RF1. Synthetic peptide located within the following region: LLKLLSGASTKRKPRVSPASPTLEVELGSAELPLQGAVGPELPPGGGHG
Formulation:	Liquid. Purified antibody supplied in 1x PBS buffer with 0.09% (w/v) sodium azide and 2% sucrose.
Conjugation:	Unconjugated
Storage:	Store at -20°C as received.
Stability:	Stable for 12 months from date of receipt.
Predicted Protein Size:	93 kDa
Gene Name:	SH3 domain containing ring finger 1
Database Link:	NP_065921 Entrez Gene 57630 Human Q7Z6I0



[View online »](#)

Background:

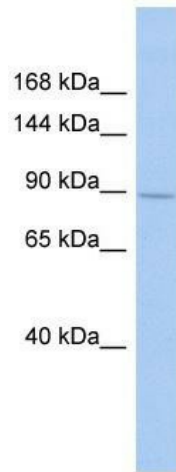
SH3RF1 acts as a scaffold protein, contributes to Rac-induced signal transduction such as JNKs (MAPK8 and MAPK9) activation and induces apoptosis. Within a signaling complex, it probably recruits protein kinases such as MAP3K10 or MAP3K11 which are in turn activated leading to the sequential activation of MAP2K4, MAP2K7 and JNKs (MAPK8 and MAPK9). SH3RF1 may be involved in targeting of HIV-1 GAG and GAG-POL polyproteins to the plasma membrane. This gene encodes a protein containing an N-terminus RING-finger, four SH3 domains, and a region implicated in binding of the Rho GTPase Rac. Via the RING-finger, the encoded protein has been shown to function as an ubiquitin-protein ligase involved in protein sorting at the trans-Golgi network. The encoded protein may also act as a scaffold for the c-Jun N-terminal kinase signaling pathway, facilitating the formation of a functional signaling module.

Synonyms:

POSH; RNF142; SH3MD2

Note:

Immunogen sequence homology: Pig: 100%; Rat: 100%; Horse: 100%; Human: 100%; Mouse: 100%; Rabbit: 100%; Guinea pig: 100%; Dog: 93%; Bovine: 93%

Product images:

WB Suggested Anti-SH3RF1 Antibody Titration:
0.2-1 ug/ml; ELISA Titer: 1:312500; Positive
Control: DU145 cell lysate