

Product datasheet for **TA330455**

MARCHF4 Rabbit Polyclonal Antibody

Product data:

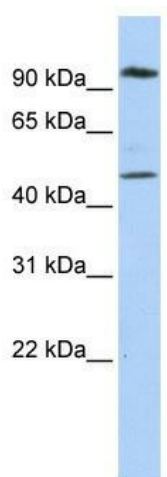
Product Type:	Primary Antibodies
Applications:	WB
Recommended Dilution:	WB
Reactivity:	Human
Host:	Rabbit
Isotype:	IgG
Clonality:	Polyclonal
Immunogen:	The immunogen for anti-MARCH4 antibody: synthetic peptide directed towards the N terminal of human MARCH4. Synthetic peptide located within the following region: GLLKCRCRMFLFNDLKVFLRRPPQAPLPMHGDPQPPGLAANNTLPALGAG
Formulation:	Liquid. Purified antibody supplied in 1x PBS buffer with 0.09% (w/v) sodium azide and 2% sucrose. <i>Note that this product is shipped as lyophilized powder to China customers.</i>
Conjugation:	Unconjugated
Storage:	Store at -20°C as received.
Stability:	Stable for 12 months from date of receipt.
Predicted Protein Size:	45 kDa
Gene Name:	membrane associated ring-CH-type finger 4
Database Link:	NP_065865 Entrez Gene 57574 Human Q9P2E8
Background:	MARCH4 is an E3 ubiquitin-protein ligase that may mediate ubiquitination of MHC-I and CD4, and promote their subsequent endocytosis and sorting to lysosomes via multivesicular bodies. E3 ubiquitin ligases accept ubiquitin from an E2 ubiquitin-conjugating enzyme in the form of a thioester and then directly transfer the ubiquitin to targeted substrates.
Synonyms:	MARCH-IV; RNF174
Note:	Immunogen sequence homology: Horse: 100%; Human: 100%; Dog: 92%; Pig: 92%; Rat: 92%; Guinea pig: 92%; Mouse: 85%; Rabbit: 85%



[View online »](#)

Protein Families: Transmembrane

Product images:



WB Suggested Anti-MARCH4 Antibody Titration:
0.2-1 ug/ml; ELISA Titer: 1:312500; Positive
Control: Hela cell lysate