

## Product datasheet for **TA330454**

### HACE1 Rabbit Polyclonal Antibody

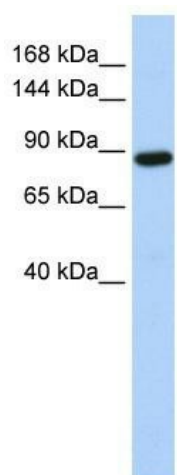
#### Product data:

Product Type:	Primary Antibodies
Applications:	WB
Recommended Dilution:	WB
Reactivity:	Human
Host:	Rabbit
Isotype:	IgG
Clonality:	Polyclonal
Immunogen:	The immunogen for anti-HACE1 antibody: synthetic peptide directed towards the middle region of human HACE1. Synthetic peptide located within the following region: DVSDWIKNTEYTSGYEREDPVIQWFWEVEDITQEERVLLLQFVTGSSRV
Formulation:	Liquid. Purified antibody supplied in 1x PBS buffer with 0.09% (w/v) sodium azide and 2% sucrose. <i>Note that this product is shipped as lyophilized powder to China customers.</i>
Conjugation:	Unconjugated
Storage:	Store at -20°C as received.
Stability:	Stable for 12 months from date of receipt.
Predicted Protein Size:	102 kDa
Gene Name:	HECT domain and ankyrin repeat containing E3 ubiquitin protein ligase 1
Database Link:	<a href="#">NP_065822</a> <a href="#">Entrez Gene 57531 Human</a> <a href="#">Q8IYU2</a>
Background:	HACE1 contains 6 ANK repeats and 1 HECT (E6AP-type E3 ubiquitin-protein ligase) domain. HACE1 is an E3 ubiquitin-protein ligase that may function in cellular proteins degradation.
Synonyms:	E3 ubiquitin protein ligase 1; HECT domain and ankyrin repeat containing
Note:	Immunogen sequence homology: Dog: 100%; Pig: 100%; Rat: 100%; Horse: 100%; Human: 100%; Mouse: 100%; Bovine: 100%; Rabbit: 100%; Guinea pig: 100%
Protein Families:	Druggable Genome



[View online »](#)

## Product images:



WB Suggested Anti-HACE1 Antibody Titration: 0.2-1 ug/ml; ELISA Titer: 1:1562500; Positive Control: Hela cell lysate