

## Product datasheet for **TA330447**

### HTR2C Rabbit Polyclonal Antibody

#### Product data:

Product Type:	Primary Antibodies
Applications:	WB
Recommended Dilution:	WB
Reactivity:	Human
Host:	Rabbit
Isotype:	IgG
Clonality:	Polyclonal
Immunogen:	The immunogen for anti-HTR2C antibody: synthetic peptide directed towards the N terminal of human HTR2C. Synthetic peptide located within the following region: SPVAAIVTDIFNTSDGGRFKFPDGVQNWPAISIVIIIIMTIGGNILVIMA
Formulation:	Liquid. Purified antibody supplied in 1x PBS buffer with 0.09% (w/v) sodium azide and 2% sucrose. <i>Note that this product is shipped as lyophilized powder to China customers.</i>
Conjugation:	Unconjugated
Storage:	Store at -20°C as received.
Stability:	Stable for 12 months from date of receipt.
Predicted Protein Size:	52 kDa
Gene Name:	5-hydroxytryptamine receptor 2C
Database Link:	<a href="#">NP_000859</a> <a href="#">Entrez Gene 3358 Human P28335</a>
Background:	This is one of the several different receptors for 5- hydroxytryptamine (serotonin), a biogenic hormone that functions as a neurotransmitter, a hormone, and a mitogen. This receptor mediates its action by association with g proteins that activate a phosphatidylinositol . calcium second messenger system.
Synonyms:	5-HT1C; 5-HT2C; 5-HTR2C; 5HTR2C; HTR1C
Note:	Immunogen sequence homology: Horse: 100%; Human: 100%; Pig: 100%; Rabbit: 100%; Mouse: 86%; Rat: 85%

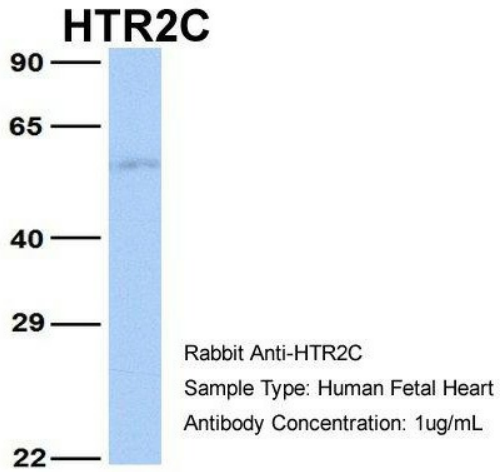


[View online »](#)

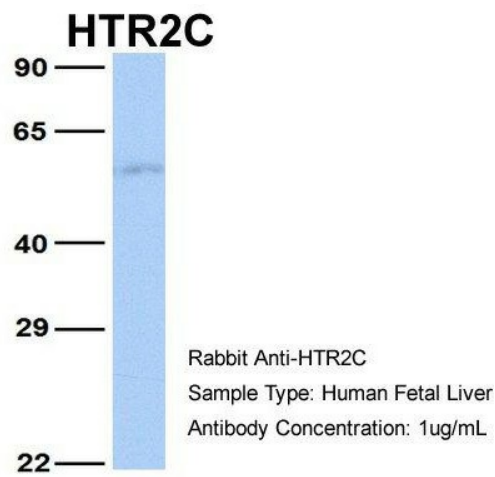
**Protein Families:** Druggable Genome, GPCR, Transmembrane

**Protein Pathways:** Calcium signaling pathway, Gap junction, Neuroactive ligand-receptor interaction

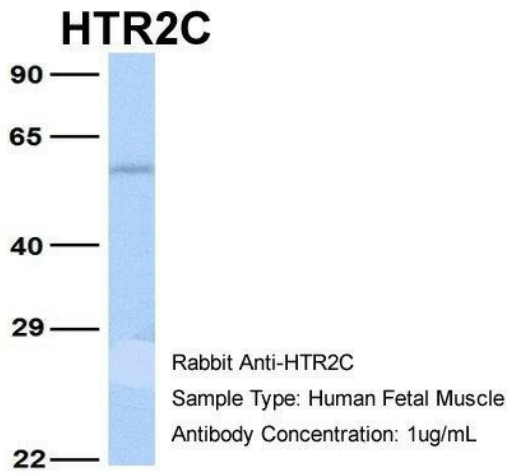
**Product images:**



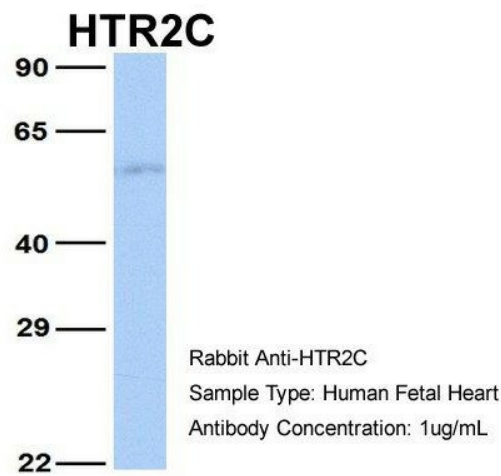
Host: Rabbit; Target Name: HTR2C; Sample Tissue: Human Fetal Heart; Antibody Dilution: 1.0ug/ml



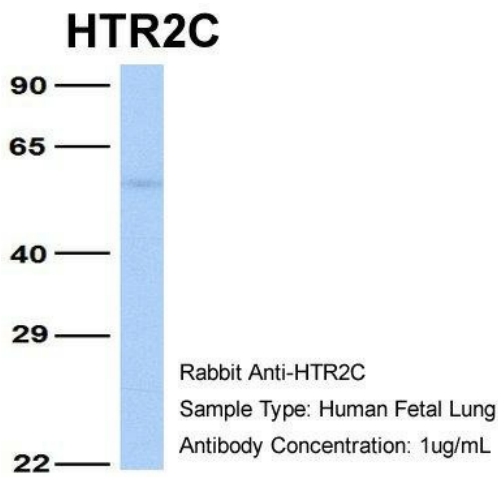
Host: Rabbit; Target Name: HTR2C; Sample Tissue: Human Fetal Liver; Antibody Dilution: 1.0ug/ml



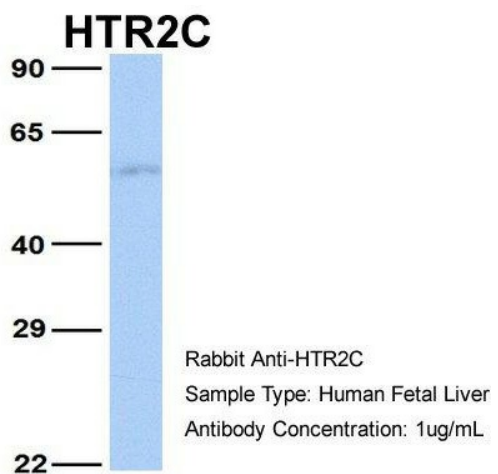
Host: Rabbit; Target Name: HTR2C; Sample Tissue: Human Fetal Muscle; Antibody Dilution: 1.0ug/ml



Host: Rabbit; Target Name: HTR2C; Sample Tissue: Human Fetal Heart; Antibody Dilution: 1.0ug/ml



Host: Rabbit; Target Name: HTR2C; Sample Tissue: Human Fetal Lung; Antibody Dilution: 1.0ug/ml



Host: Rabbit; Target Name: HTR2C; Sample Tissue: Human Fetal Liver; Antibody Dilution: 1.0ug/ml



WB Suggested Anti-HTR2C Antibody Titration: 5.0ug/ml; Positive Control: Daudi cell lysate HTR2C is supported by BioGPS gene expression data to be expressed in Daudi