

Product datasheet for **TA330446**

5 HT 2A (HTR2A) Rabbit Polyclonal Antibody

Product data:

Product Type:	Primary Antibodies
Applications:	WB
Recommended Dilution:	WB
Reactivity:	Human
Host:	Rabbit
Isotype:	IgG
Clonality:	Polyclonal
Immunogen:	The immunogen for anti-HTR2A antibody: synthetic peptide directed towards the N terminal of human HTR2A. Synthetic peptide located within the following region: DILCEENTSLSSTTNSLMQLNDDTRLYSNDFNSGEANTSDAFNWTVDSEN
Formulation:	Liquid. Purified antibody supplied in 1x PBS buffer with 0.09% (w/v) sodium azide and 2% sucrose. <i>Note that this product is shipped as lyophilized powder to China customers.</i>
Conjugation:	Unconjugated
Storage:	Store at -20°C as received.
Stability:	Stable for 12 months from date of receipt.
Predicted Protein Size:	52 kDa
Gene Name:	5-hydroxytryptamine receptor 2A
Database Link:	NP_000612 Entrez Gene 3356 Human P28223
Background:	HTR2A belongs to the G-protein coupled receptor 1 family. It is one of the several different receptors for 5-hydroxytryptamine (serotonin), a biogenic hormone that functions as a neurotransmitter, a hormone, and a mitogen. This receptor mediates its action by association with G proteins that activate a phosphatidylinositol-calcium second messenger system. This receptor is involved in tracheal smooth muscle contraction, bronchoconstriction, and control of aldosterone production.
Synonyms:	5-HT2A; HTR2



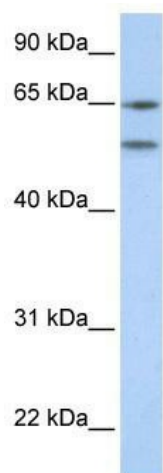
[View online »](#)

Note: Immunogen sequence homology: Human: 100%; Pig: 92%; Mouse: 78%

Protein Families: Druggable Genome, GPCR, Transmembrane

Protein Pathways: Calcium signaling pathway, Gap junction, Neuroactive ligand-receptor interaction

Product images:



WB Suggested Anti-HTR2A Antibody Titration: 0.2-1 ug/ml; ELISA Titer: 1:312500; Positive Control: 721_B cell lysate HTR2A is supported by BioGPS gene expression data to be expressed in 721_B